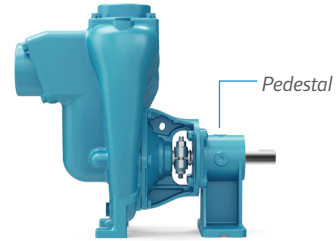
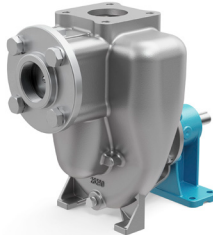
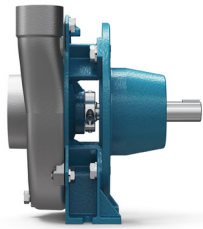




OBERDORFER

Pump Modeling Sheet

Note: Standard Seal Material - Carbon/Ceramic/Viton



► PED

MP 21339 FM8 PMP C: PED 5.0 XXX XXX XX

PREFIX

PUMP MODEL AND SIZE

HOUSING MATERIAL OF CONSTRUCTION

IMPELLER DIAMETER

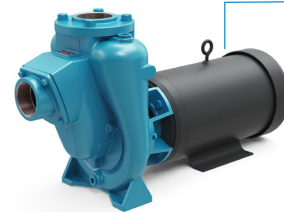
MP PART NO.

PUMP OR PUMPAK

HOW THE PUMP IS DRIVEN

ANY ADDITIONAL FEATURES

► PMP



Pump with driver supplied
• Electric motor
• Hydraulic motor

MP 33700 HT080 PMP D: 3-3 56C 5.9 T-2 NRS FF HD

PREFIX

PUMP MODEL AND SIZE

HOUSING MATERIAL OF CONSTRUCTION

FRAME SIZE

SPECIAL MECHANICAL SEAL

MP PART NO.

PUMP OR PUMPAK

HORSEPOWER / PHASE

IMPELLER DIAMETER

ANY ADDITIONAL FEATURES

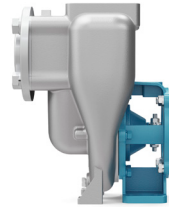
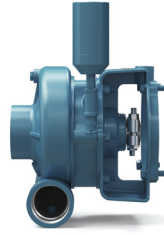


OBERDORFER

34800 Bennett Drive • Fraser, MI 48026
MP (800) 563.8006 • Oberdorfer (800) 448.1668
www.mppumps.com • www.oberdorferpumps.com



©2022 Ingersoll Rand MPOB-0322-005 EN

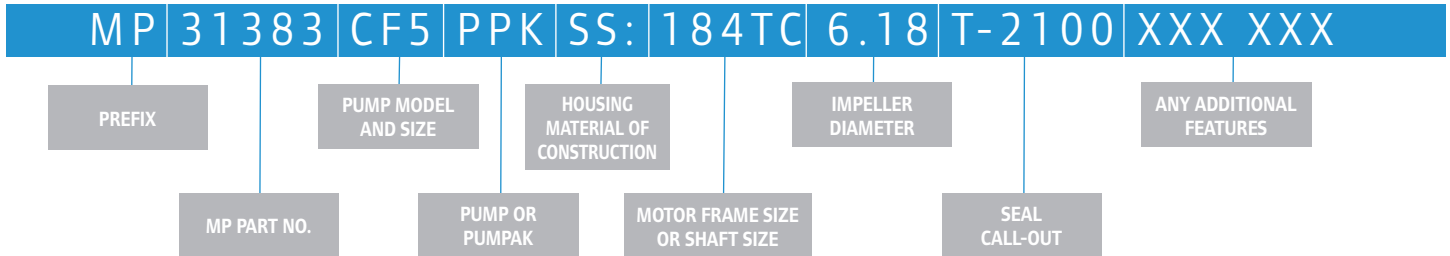


Pump Only (No Motor Driver Supplied)

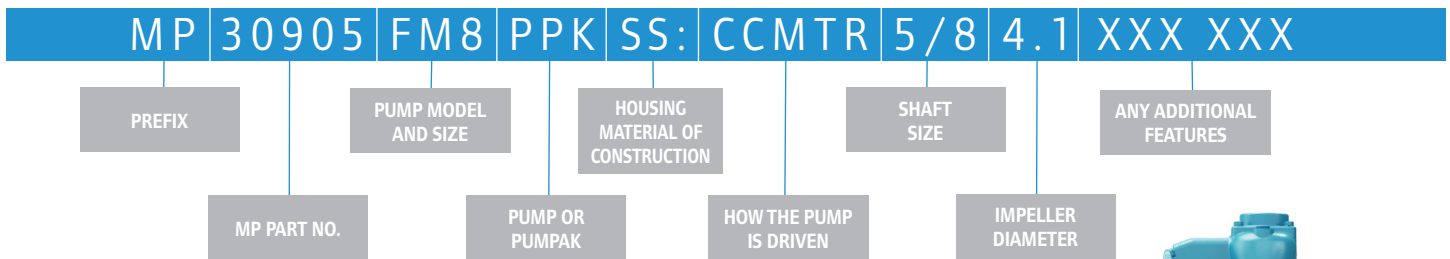
4 Mounting Options:

- "C" Face Motor
- Pedestal
- Hydraulic Motor
- Engine Mount

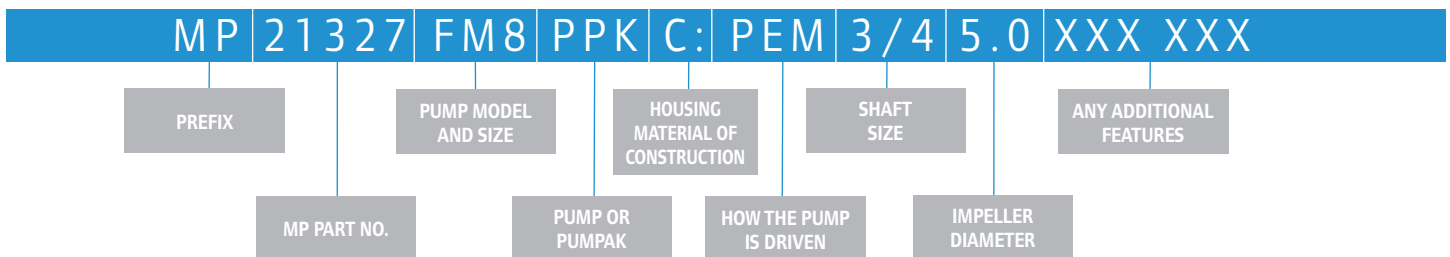
► PPK



► CCMTR - Close-Coupled Motor



► PEM - Pedestal or Engine Mount (Direct coupled to pump)



- A PEM is a Pump-End Only ready to mount to a Pedestal or an Engine drive.
- Engine can be mounted direct.
- To add an electric motor, a pedestal must be purchased and long coupled to the Pump-End Only.
- For hydraulically driven builds, a hydraulic pedestal can be directly coupled to a PEM Pump-End.