



# Self Priming Centrifugal Pump

## Models 82E-GX270 and 82E2-GX270

### Size 2" x 2"



12M



Total Head		Capacity Of Pump In U.S. Gallons Per Minute (GPM) At Continuous Performance				
P.S.I.	Feet					
58.0	135	46	46	46	46	46
52.0	120	76	96	102	102	102
43.4	100	80	111	139	156	158
34.7	80	80	115	142	172	190
26.0	60	81	117	144	176	202
17.5	40	81	118	145	178	209
8.7	20	81	118	146	179	213
<b>Suction Lift</b>		<b>25'</b>	<b>20'</b>	<b>15'</b>	<b>10'</b>	<b>5'</b>



#### PUMP SPECIFICATIONS

**Size:** 2" x 2" (51 mm x 51 mm) NPT - Female.

#### Casing:

**(82E-GX270)** Aluminum Alloy 356-T6  
w/Gray Iron 30 Cutwater Insert.

**(82E2-GX270)** Gray Iron 30.  
Maximum Operating Pressure 94 psi (648 kPa).\*

**Semi-Open Type, Four Vane Impeller:** Gray Iron 30.  
Handles 3/4" (19,1 mm) Diameter, Spherical Solids.

**Replaceable Wear Plate:** Carbon Steel ASTM A36.

**Intermediate Bracket:** Gray Iron 30.

**Seal:** Double, Grease-Lubricated w/Spring-Loaded Grease Cup. Sintered Bronze Stationary Seal Seats. Steel Rotating Faces. Neoprene Packing Rings. Maximum Temperature of Liquid Pumped, 110°F (43°C). Maximum Suction Pressure 10 psi (69 kPa).\*

**Seal Liner:** Copper Alloy C26000.

**Flap Valve:** Buna-N w/Nylon Reinforcement, Gray Iron 30 and Sintered Powdered Steel.

#### Suction Flange:

**(82E-GX270)** Aluminum Alloy 356-T6.  
**(82E2-GX270)** Gray Iron 30.

**Gaskets:** Vegetable Fiber.

**Hardware:** Standard Plated Steel.

**Standard Equipment:** Roll Cage w/Rubber Feet. Strainer. 90° Discharge Elbow.

**Optional Equipment:** Wheel Kit w/Semi-Pneumatic Tires.

\*Consult Factory for Applications Exceeding Maximum Pressure and/or Temperature Indicated.



#### ENGINE SPECIFICATIONS:

**Model:** Honda GX270

**Type:** Single Cylinder, Four Cycle, Air Cooled, Overhead Valve, Gasoline Engine.

**Displacement:** 16.5 Cu. In. (270 cc).

**Carburetor:** Horizontal Type.

**Cylinder:** Aluminum Alloy w/Cast Iron Liner.

**Lubrication:** Splash System.

**Air Cleaner:** Dry Type, Dual Element.

**Fuel Tank:** 1.4 U.S. Gallons (5,3 Liters)

**Full Load Operating Time:** Unavailable.\*\*

**Ignition System:** Transistorized Magneto.

**Standard Equipment:** Muffler w/Guard. Manual Throttle Control with Top Speed Limit. Manual Choke. "Oil Alert™" Low Oil Shut Down.

\*\* Fuel Consumption Data Not Available From Engine Manufacturer.



## GORMAN-RUPP PUMPS

www.grpumps.com

Specifications Subject to Change Without Notice

Printed in U.S.A.

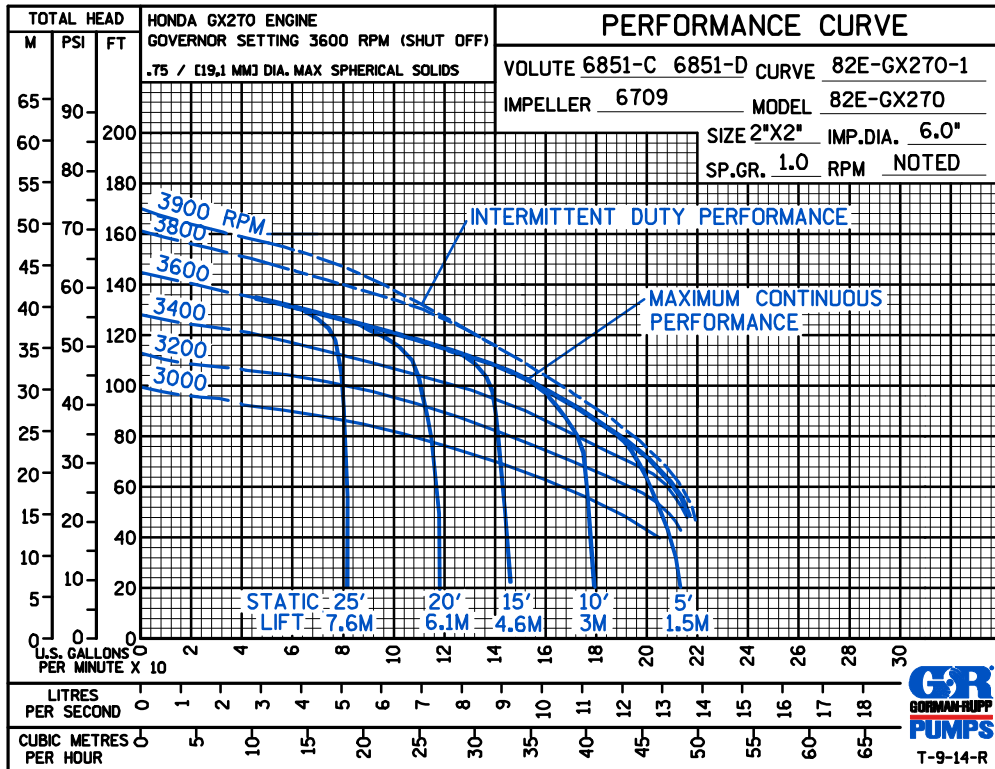
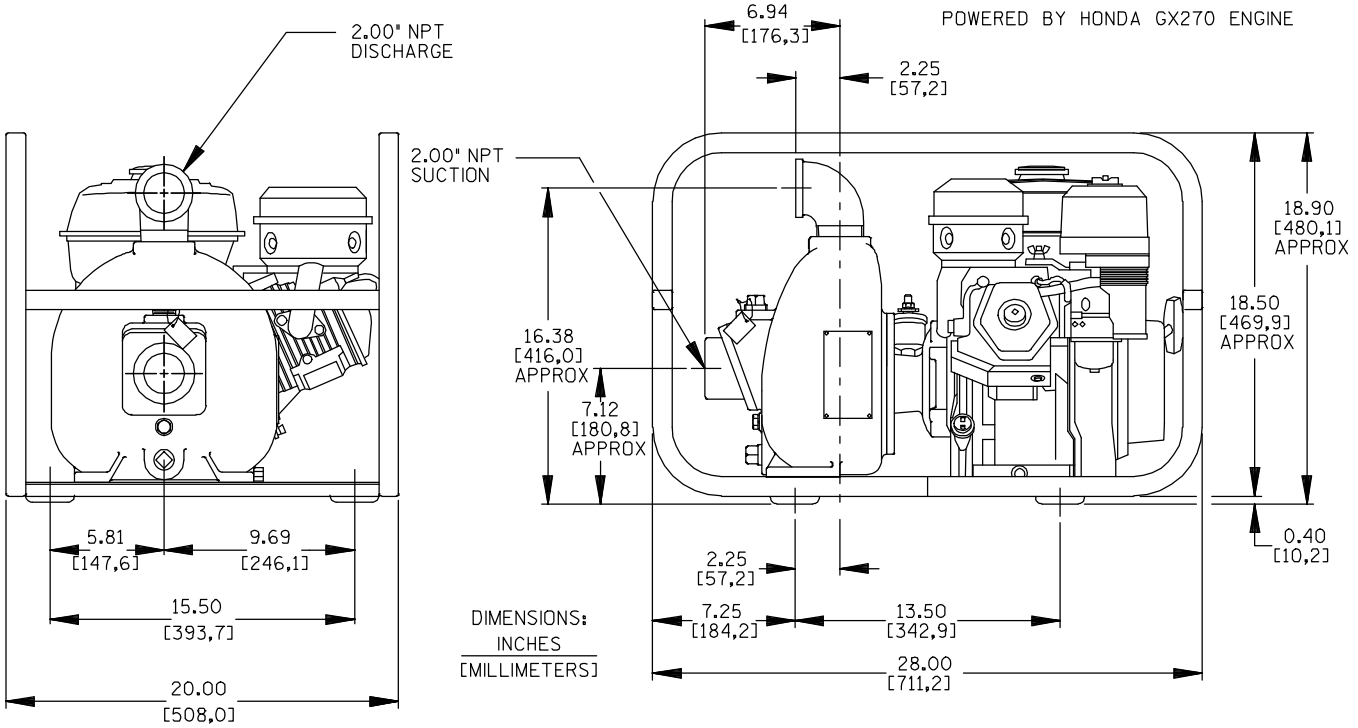
**Specification Data**

SECTION 40, PAGE 675

APPROXIMATE DIMENSIONS and WEIGHTS

**MODEL** 82E  
**NET WEIGHT:** 118 LBS. [54 KG.]  
**SHIPPING WEIGHT:** 130 LBS. [59 KG.]  
**EXPORT CRATE SIZE:** 7.0 CU. FT. [.20 CU. M.]  
**WHEEL KIT ADD 25 LBS. (11,3 KG.); CRATE (SEPARATE) 3 CU.FT. (0,1 CU. M.)**

**82E2**  
 148 LBS. [67 KG.]  
 160 LBS. [73 KG.]



**GORMAN-RUPP PUMPS**

www.grpumps.com

Specifications Subject to Change Without Notice

Printed in U.S.A.