

Gasoline Engine Driven

Self Priming Centrifugal Pump



Models 82D-GX160, 82D1-GX160,
82D2-GX160 and 82D52-GX160

Size 2" x 2"



Total Head		Capacity of Pump in U.S. Gallons per Minute (GPM) at Continuous Performance				
P.S.I.	Feet					
41.6	96	30	30	30	30	30
39.0	90	50	50	50	50	50
34.7	80	67	82	82	82	82
30.3	70	75	97	108	108	108
26.0	60	79	104	124	139	139
21.7	50	81	107	130	144	144
17.3	40	83	108	134	152	156
13.0	30	84	109	135	157	164
8.7	20	85	110	136	160	170
Suction Lift		25'	20'	15'	10'	5'



PUMP SPECIFICATIONS

Size: 2" x 2" (51 mm x 51 mm) NPT - Female.

Casing:

(82D and 82D1) Aluminum 356-T6 w/Gray Iron 30 Cutwater Insert.

(82D2 and 82D52) Gray Iron 30.

Maximum Operating Pressure 67 psi (462 kPa).*

Semi-Open Type, Three Vane Impeller:

(82D, 82D2 and 82D52) Gray Iron 30.

(82D1) Ductile Iron 65-45-12.

Handles 5/8" (15,8 mm) Diameter Spherical Solids.

Replaceable Wear Plate: Carbon Steel ASTM A36.

Intermediate Bracket: Gray Iron 30.

Seal:

(82D and 82D2) Double, Grease-Lubricated w/Spring-Loaded Grease Cup. Sintered Bronze Stationary Seal Seats. Steel Rotating Faces. Maximum Temperature of Liquid Pumped, 110°F (43°C). Maximum Suction Pressure 10 psi (69 kPa).*

(82D1 and 82D52) Type 31, Mechanical, Self-Lubricated. Silicon Carbide Rotating and Stationary Faces. Fluorocarbon Elastomers (DuPont Viton® or Equivalent). Stainless Steel 316 Cage and Spring. Maximum Temperature of Liquid Pumped 160°F (71°C).*

Seal Liner (82D and 82D2): Copper Alloy C26000.

Seal Sleeve (82D1 and 82D52): Stainless Steel 304.

Flap Valve: Buna-N w/Nylon Reinforcement; Gray Iron 30 and Sintered Powdered Steel.

Suction Flange:

(82D and 82D1) Aluminum 356-T6.

(82D2 and 82D52) Gray Iron 30.

Gaskets: Vegetable Fiber.

Hardware: Standard Plated Steel.

Standard Equipment: 90° Discharge Elbow. Rollover Base w/Rubber Feet.

Optional Equipment: Wheel Kit w/Semi-Pneumatic Tires.

**Consult Factory for Applications Exceeding Maximum Pressure and/or Temperature Indicated.*



ENGINE SPECIFICATIONS

Model: Honda GX160.

Type: Single Cylinder, Four Cycle, Air Cooled, Overhead Valve, Gasoline Engine.

Displacement: 9.9 Cu. In. (163 cc).

Carburetor: Horizontal Type.

Lubrication: Splash System.

Air Cleaner: Dual Element.

Fuel Tank: 3.8 U.S. Qts. (3,6 Liter).

Full Load Operating Time: 3.7 Hrs.

Starter: Rope Rewind.

Standard Equipment: Muffler w/Guard. Manual Rotary Stop Switch. Manual Choke and Throttle Control w/Top Speed Limit. "Oil Alert"™ Low Oil Shut Down. Transistorized Magneto Ignition.



GORMAN-RUPP PUMPS

www.grpumps.com

Specifications Subject to Change Without Notice

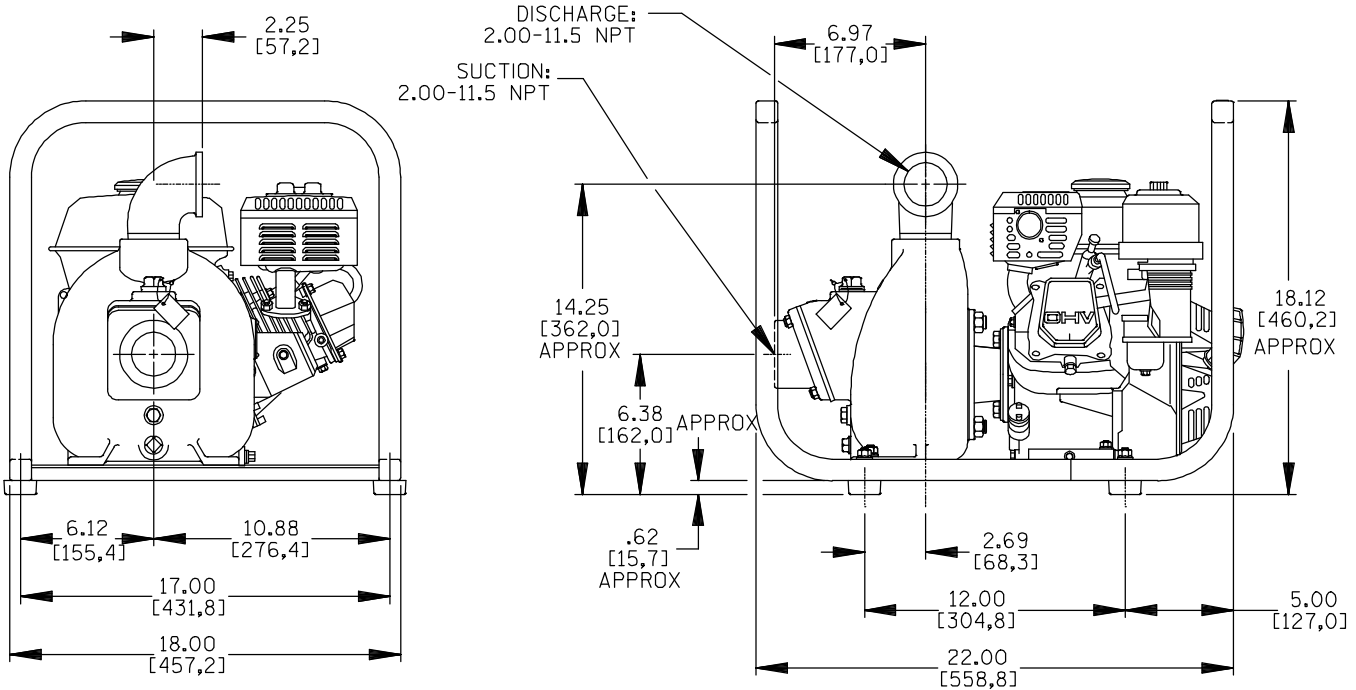
Printed in U.S.A.

Specification Data

SECTION 40, PAGE 470

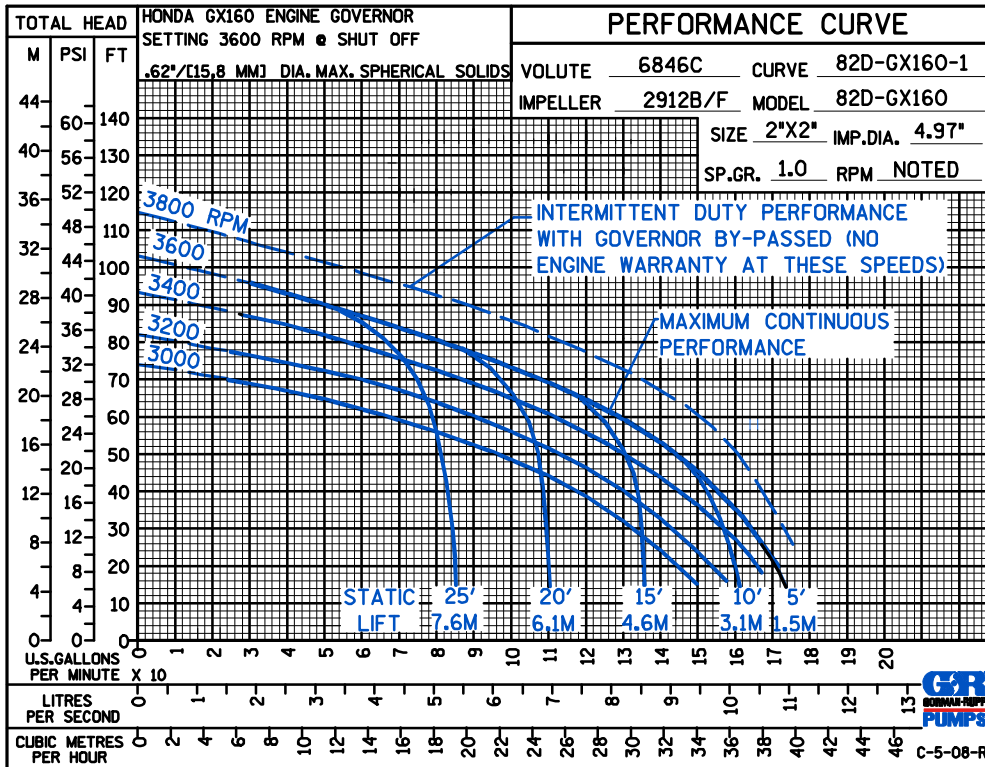
APPROXIMATE DIMENSIONS and WEIGHTS

MODEL	NET WEIGHT	SHIPPING WEIGHT	EXPORT CRATE SIZE
82D & 82D1	86 LBS. (39 KG.)	92 LBS. (42 KG.)	4.6 CU. FT. (0,13 CU. M.)
82D2 & 82D52	97 LBS. (44 KG.)	103 LBS. (47 KG.)	4.6 CU. FT. (0,13 CU. M.)
WHEEL KIT ADD 25 LBS. (11,3 KG.); SHIPPING CRATE (SEPARATE) 3 CU. FT. (0,1 CU. M.)			



DIMENSIONS:
INCHES
[MILLIMETERS]

POWERED BY HONDA GX160 ENGINE



GORMAN-RUPP PUMPS

www.grpumps.com

Specifications Subject to Change Without Notice

Printed in U.S.A.