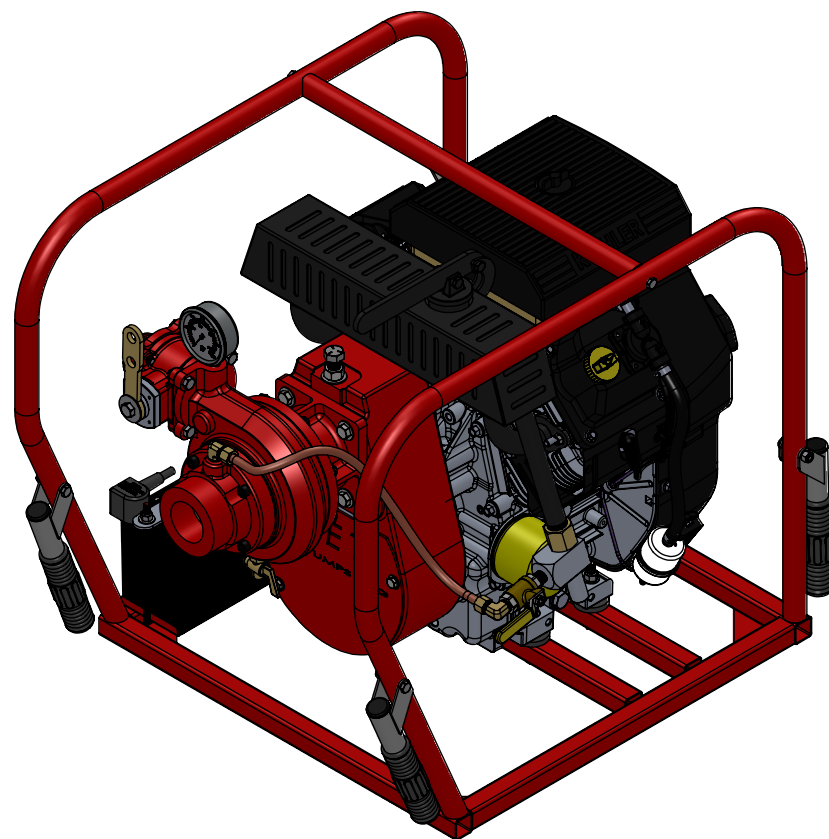
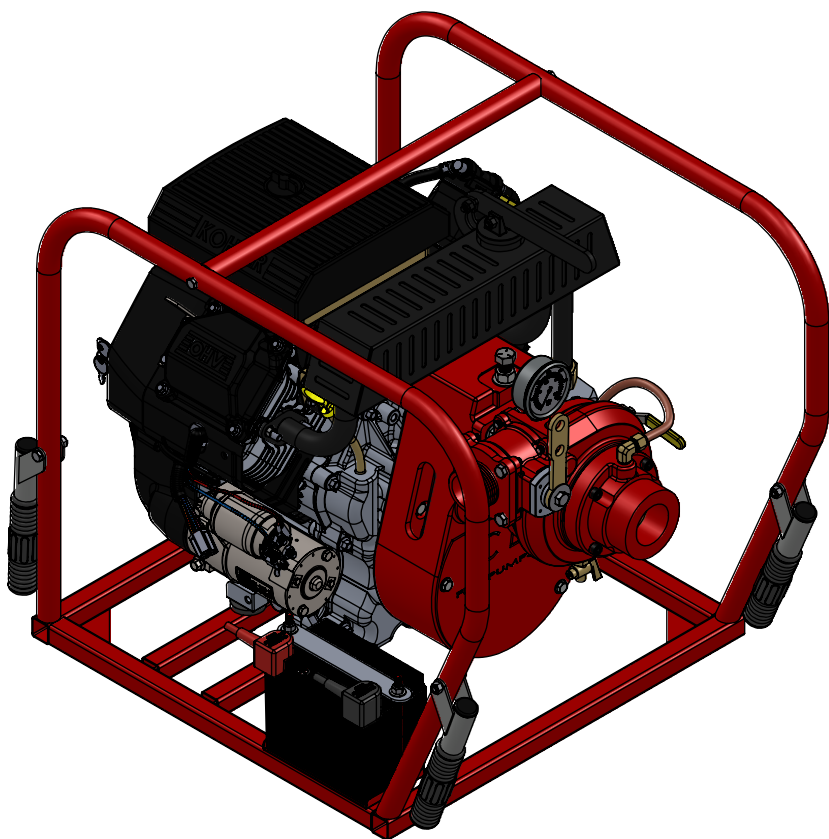
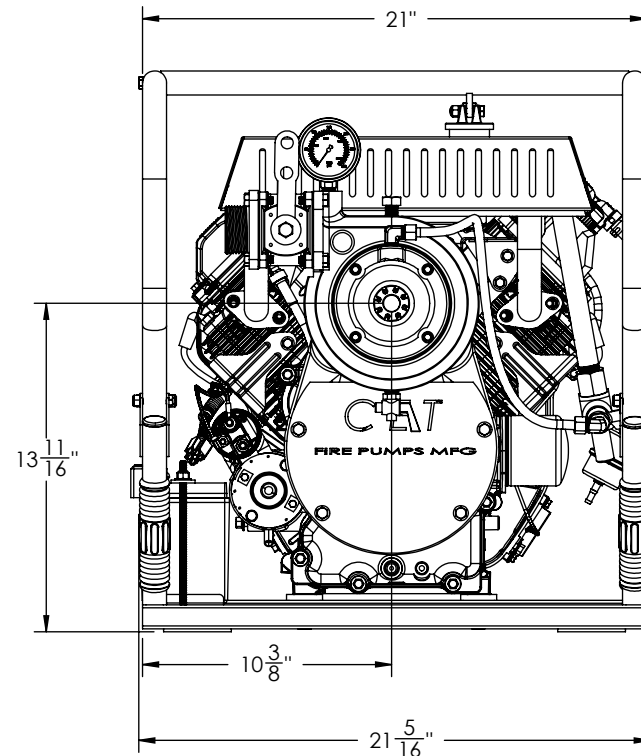
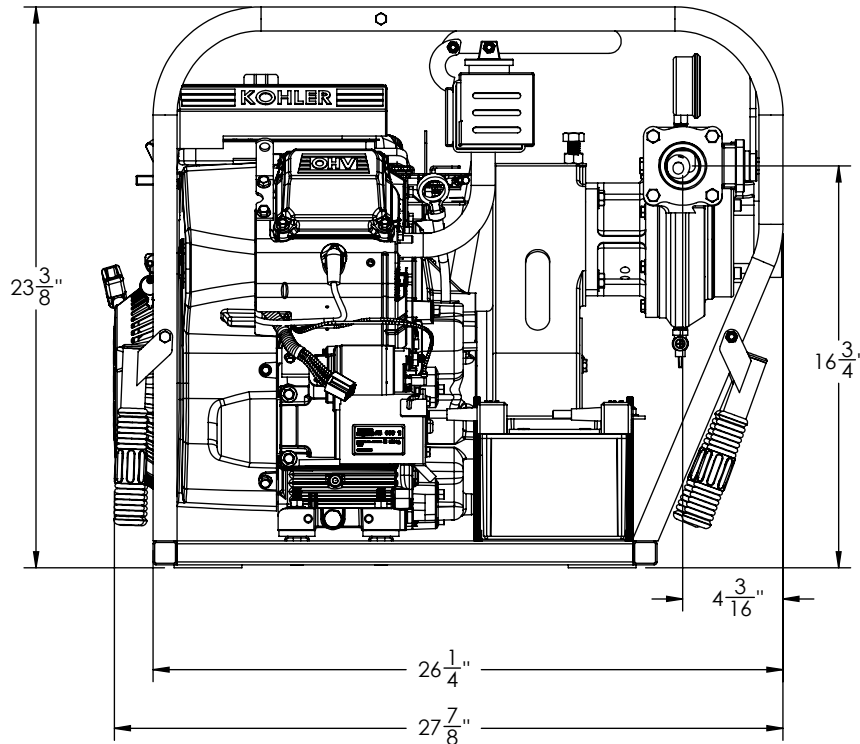




PORTABLE FIRE PUMP
PFP-20hpKHL-HP
CH640 KOHLER WITH HIGH-PRESSURE PUMP

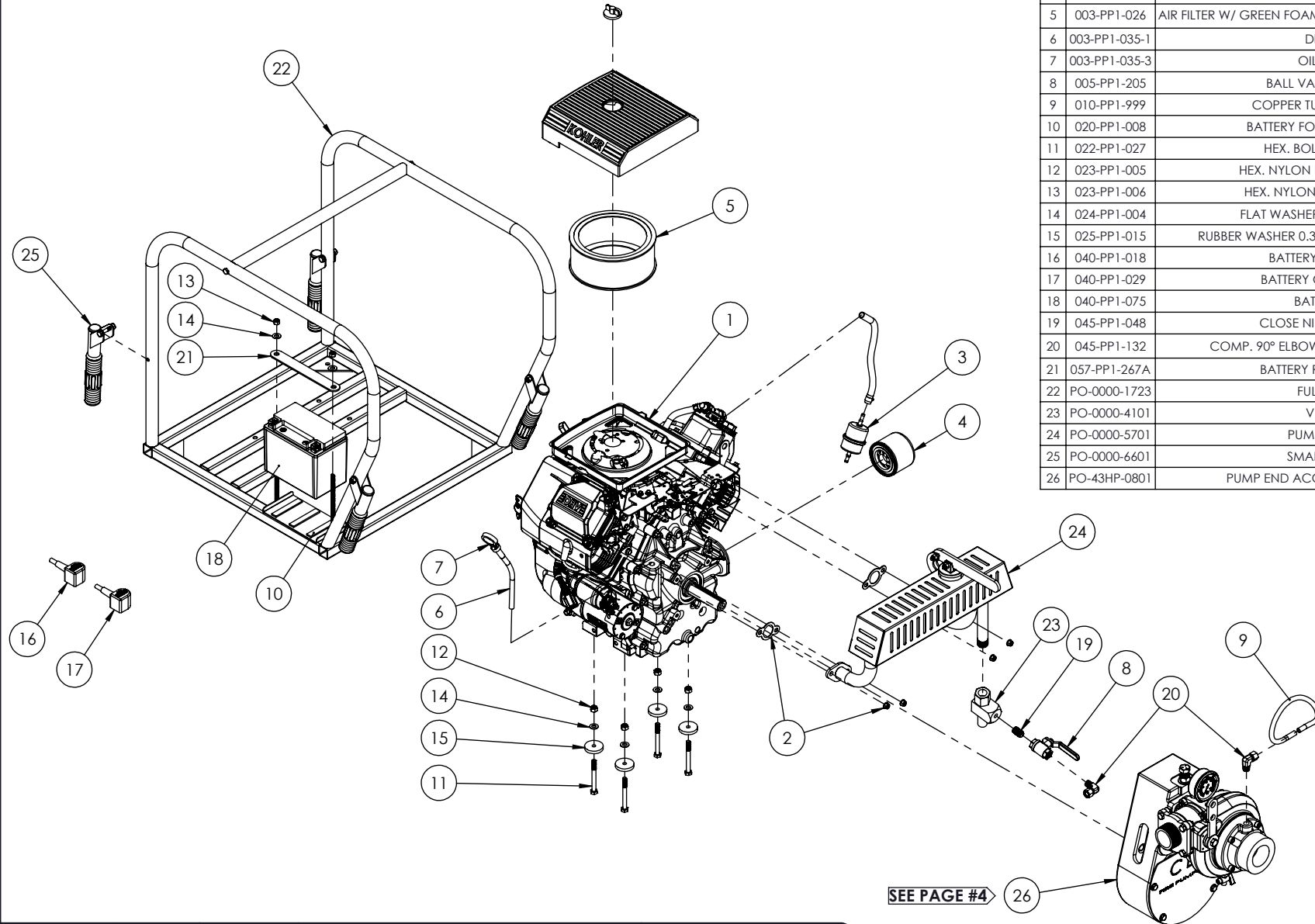


WE CAN CUSTOMIZE AS YOU WANT



WET WEIGHT: 180 lbs

		CREATED BY: M.P. DATE: 26-09-16	TITLE : PFP-20hpKHL-HP FULL FRAME	WARNING THIS DOCUMENT REMAINS THE PROPERTY OF C.E.T. FIRE PUMPS MFG. ALL REPRODUCTION WITHOUT WRITTEN AGREEMENT FROM C.E.T. FIRE PUMPS MFG IS TOTALLY PROHIBITED.	A REV.	Version A DESCRIPTION	01-01-16 DATE	M.P. BY
		VERIFIED BY: M.P. DATE: 26-09-16	No: PO-43HP-0701-A					



NO	PART NUMBER	DESCRIPTION	QTY
1	001-PP1-029	KOHLER ENGINE, ELECTRIC/MANUAL 20hp GAS	1
2	003-PP1-017	GASKET MUFFLER KIT	1
3	003-PP1-022	FUEL FILTER KOHLER 20, 25 & 27hp	1
4	003-PP1-025	OIL FILTER for 20hp, 25hp, 27hp & 38hp KOHLER	1
5	003-PP1-026	AIR FILTER W/ GREEN FOAM for 20hp, 25hp & 27hp KOHLER	1
6	003-PP1-035-1	DIP STICK	1
7	003-PP1-035-3	OIL GAUGE	1
8	005-PP1-205	BALL VALVE 1/4" NPT-F	1
9	010-PP1-999	COPPER TUBE 3/8" x 17-3/4"	1
10	020-PP1-008	BATTERY FOAM TAPE 1/2" x 3"	3
11	022-PP1-027	HEX. BOLT 5/16"-18 x 3"	4
12	023-PP1-005	HEX. NYLON LOCK NUT 5/16"-18	4
13	023-PP1-006	HEX. NYLON LOCKNUT 1/4"-20	2
14	024-PP1-004	FLAT WASHER 5/16" ID x 3/4"OD	6
15	025-PP1-015	RUBBER WASHER 0.312" INT x 1.5" EXT. x 1/4" TK	4
16	040-PP1-018	BATTERY CABLE (RED)	1
17	040-PP1-029	BATTERY CABLE (BLACK)	1
18	040-PP1-075	BATTERY 12v	1
19	045-PP1-048	CLOSE NIPPLE 1/4 NPT-M	1
20	045-PP1-132	COMP. 90° ELBOW 3/8" TUBE x 1/4" NPT-M	2
21	057-PP1-267A	BATTERY RETAINER PLATE	1
22	PO-0000-1723	FULL FRAME	1
23	PO-0000-4101	VENTURY	1
24	PO-0000-5701	PUMP MUFFLER	1
25	PO-0000-6601	SMALL HANDLE	4
26	PO-43HP-0801	PUMP END ACCESSORIES ASSEMBLY	1

SEE PAGE #4



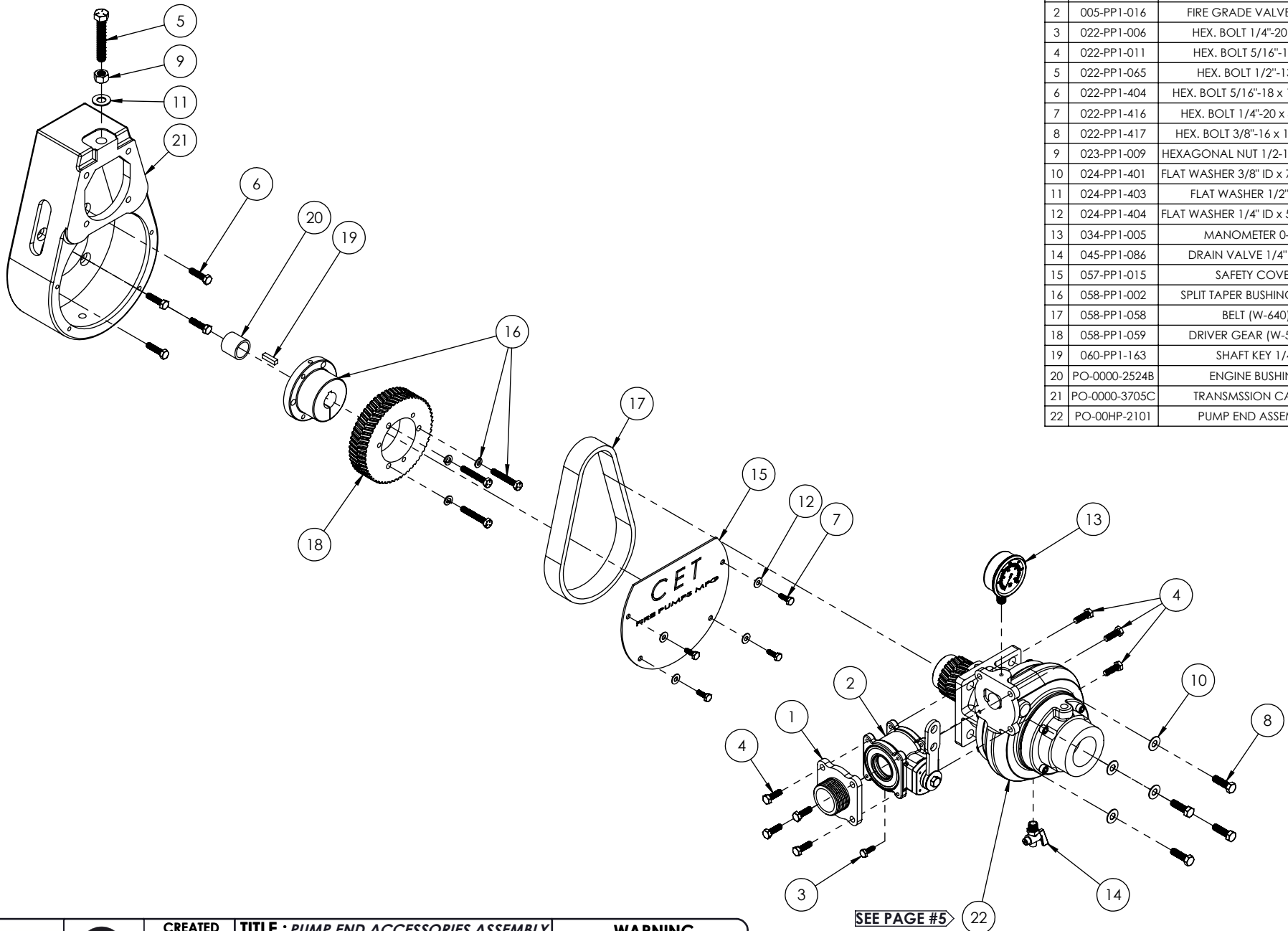
CREATED
BY: M.P.
DATE: 26-09-16
VERIFIED
BY: M.P.
DATE: 26-09-16

TITLE : PFP-20hpKHL-HP
FULL FRAME
No: PO-43HP-0701-A

WARNING

THIS DOCUMENT REMAINS THE PROPERTY OF C.E.T. FIRE PUMPS MFG.
ALL REPRODUCTION WITHOUT WRITTEN AGREEMENT FROM C.E.T. FIRE PUMPS MFG IS TOTALLY PROHIBITED.

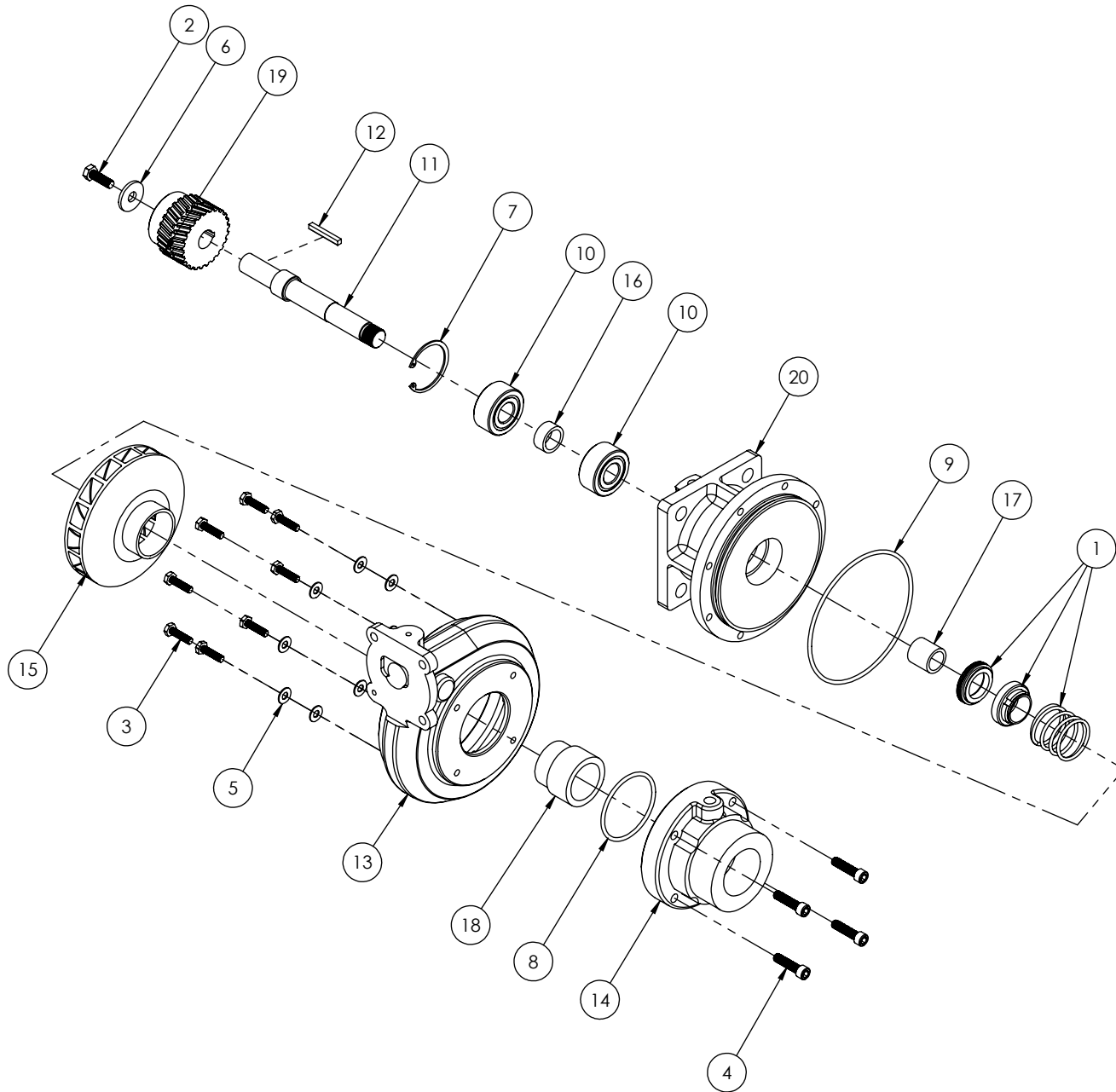
A	Version A	01-01-16	M.P.
REV.	DESCRIPTION	DATE	BY



NO	PART NUMBER	DESCRIPTION	QTY
1	002-PP1-301	FLANGE 1-1/2"	1
2	005-PP1-016	FIRE GRADE VALVE 1-1/2"	1
3	022-PP1-006	HEX. BOLT 1/4"-20 x 3/4"	1
4	022-PP1-011	HEX. BOLT 5/16"-18 x 1"	7
5	022-PP1-065	HEX. BOLT 1/2"-13 x 3"	1
6	022-PP1-404	HEX. BOLT 5/16"-18 x 1-1/4" (SS)	4
7	022-PP1-416	HEX. BOLT 1/4"-20 x 3/4" (SS)	4
8	022-PP1-417	HEX. BOLT 3/8"-16 x 1-1/4" (SS)	4
9	023-PP1-009	HEXAGONAL NUT 1/2-13 GR5 ZINC	1
10	024-PP1-401	FLAT WASHER 3/8" ID x 7/8" OD (SS)	4
11	024-PP1-403	FLAT WASHER 1/2" SS304	1
12	024-PP1-404	FLAT WASHER 1/4" ID x 5/8" OD (SS)	4
13	034-PP1-005	MANOMETER 0-300	1
14	045-PP1-086	DRAIN VALVE 1/4" NPT-M	1
15	057-PP1-015	SAFETY COVER	1
16	058-PP1-002	SPLIT TAPER BUSHING (SKX1)	1
17	058-PP1-058	BELT (W-640)	1
18	058-PP1-059	DRIVER GEAR (W-56S-SK)	1
19	060-PP1-163	SHAFT KEY 1/4"	1
20	PO-0000-2524B	ENGINE BUSHING	1
21	PO-0000-3705C	TRANSMSSION CASING	1
22	PO-00HP-2101	PUMP END ASSEMBLY	1

	 ISO 9001 Registered Quality Management	CREATED BY: M.P. DATE: 15-09-16	TITLE : PUMP END ACCESSORIES ASSEMBLY 20hpKHL-HP	WARNING THIS DOCUMENT REMAINS THE PROPERTY OF C.E.T. FIRE PUMPS MFG. ALL REPRODUCTION WITHOUT WRITTEN AGREEMENT FROM C.E.T. FIRE PUMPS MFG IS TOTALLY PROHIBITED.
		VERIFIED BY: M.P. DATE: 15-09-16	No: PO-43HP-0801	

A	Version A	01-01-16	M.P.
REV.	DESCRIPTION	DATE	BY



NO	PART NUMBER	DESCRIPTION	QTY
1	020-PP1-006	1.00" T-21 BP1C1 SEALS	1
2	022-PP1-403	HEX. BOLT 5/16"-18 x 1" (SS)	1
3	022-PP1-410	HEX. BOLT 1/4"-20 x 1" (SS)	8
4	022-PP1-872	SOCKET HEAD CAP SCREW 5/16"-18 x 1-1/4"	4
5	024-PP1-404	FLAT WASHER 1/4" ID x 5/8" OD (SS)	8
6	024-PP1-420	WASHER	1
7	025-PP1-040	RETAINING RING	1
8	052-PP1-230	O-RING 2-230 AB	1
9	052-PP1-251	O-RING	1
10	058-PP1-001	BEARING	2
11	060-PP1-166A	SHAFT	1
12	060-PP1-241	KEY SHAFT 3/16" x 3/16" x 1.5"	1
13	PO-0000-2205	CASING	1
14	PO-0000-2303	COVER	1
15	PO-0000-2404	IMPELLER	1
16	PO-0000-2509	BUSHING	1
17	PO-0000-2523	BUSHING	1
18	PO-0000-2603	WATER RING	1
19	PO-0000-2701	DRIVEN GEAR (W-25S-MPB)	1
20	PO-0000-3702	BELL HOUSING	1



nqa.
ISO 9001
Registered
Quality
Management

CREATED
BY: M.P.
DATE: 09-09-16
VERIFIED
BY: M.P.
DATE: 09-09-16

TITLE : **PUMP END ASSEMBLY**
18hpVGD-20hpHND/KHL-23hpVGD
No: **PO-00HP-2101**

WARNING
THIS DOCUMENT REMAINS THE PROPERTY
OF C.E.T. FIRE PUMPS MFG.
ALL REPRODUCTION WITHOUT WRITTEN
AGREEMENT FROM C.E.T. FIRE PUMPS MFG
IS TOTALLY PROHIBITED.

A	Version A	01-01-16	M.P.
REV.	DESCRIPTION	DATE	BY