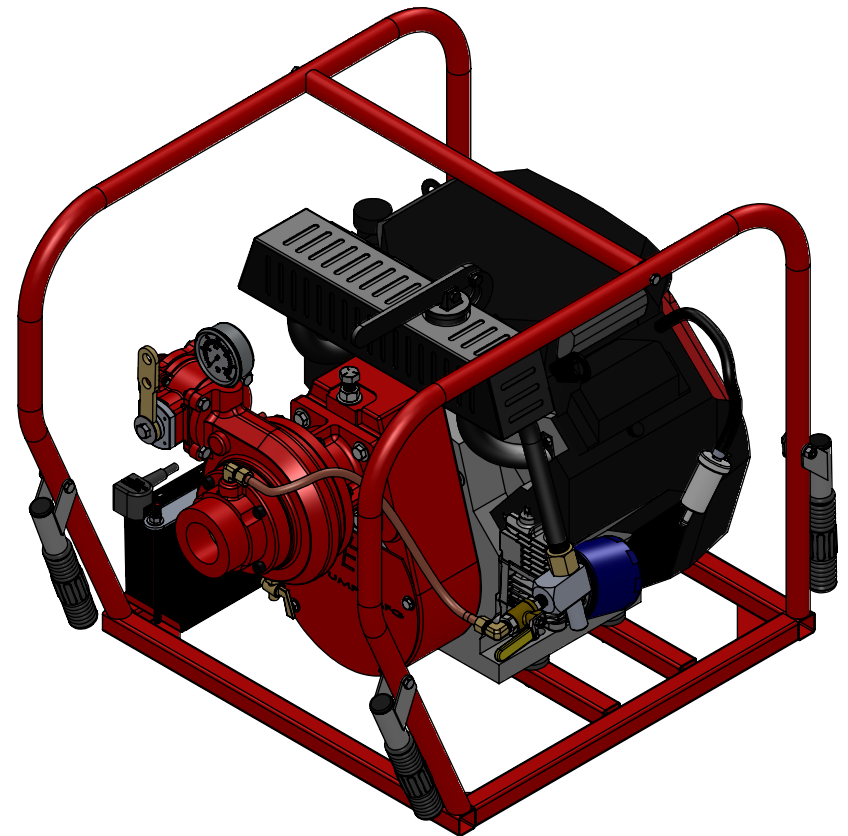
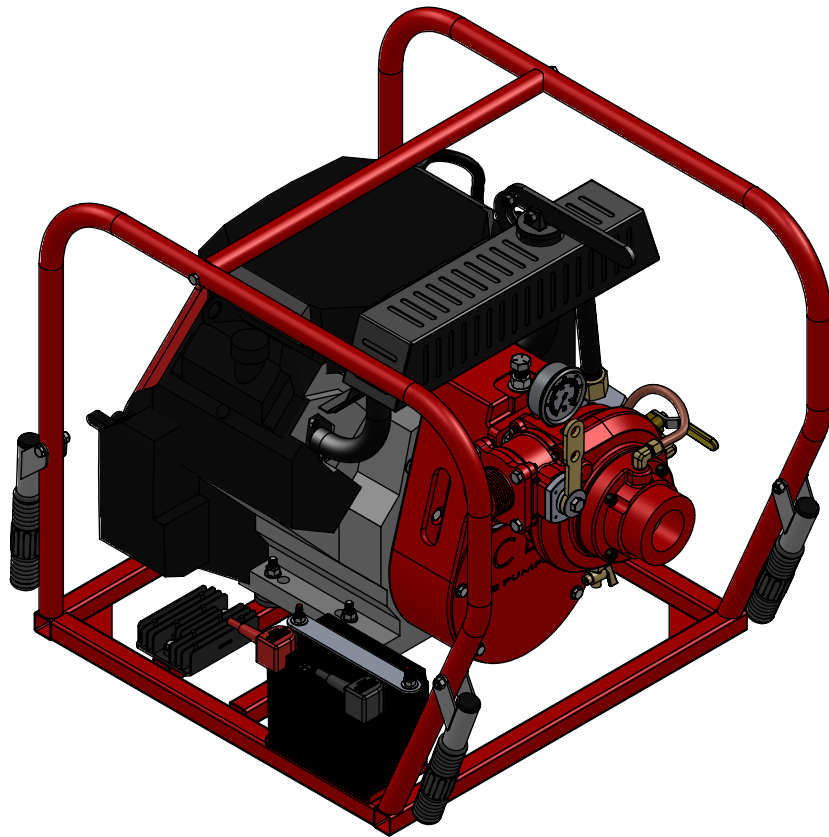
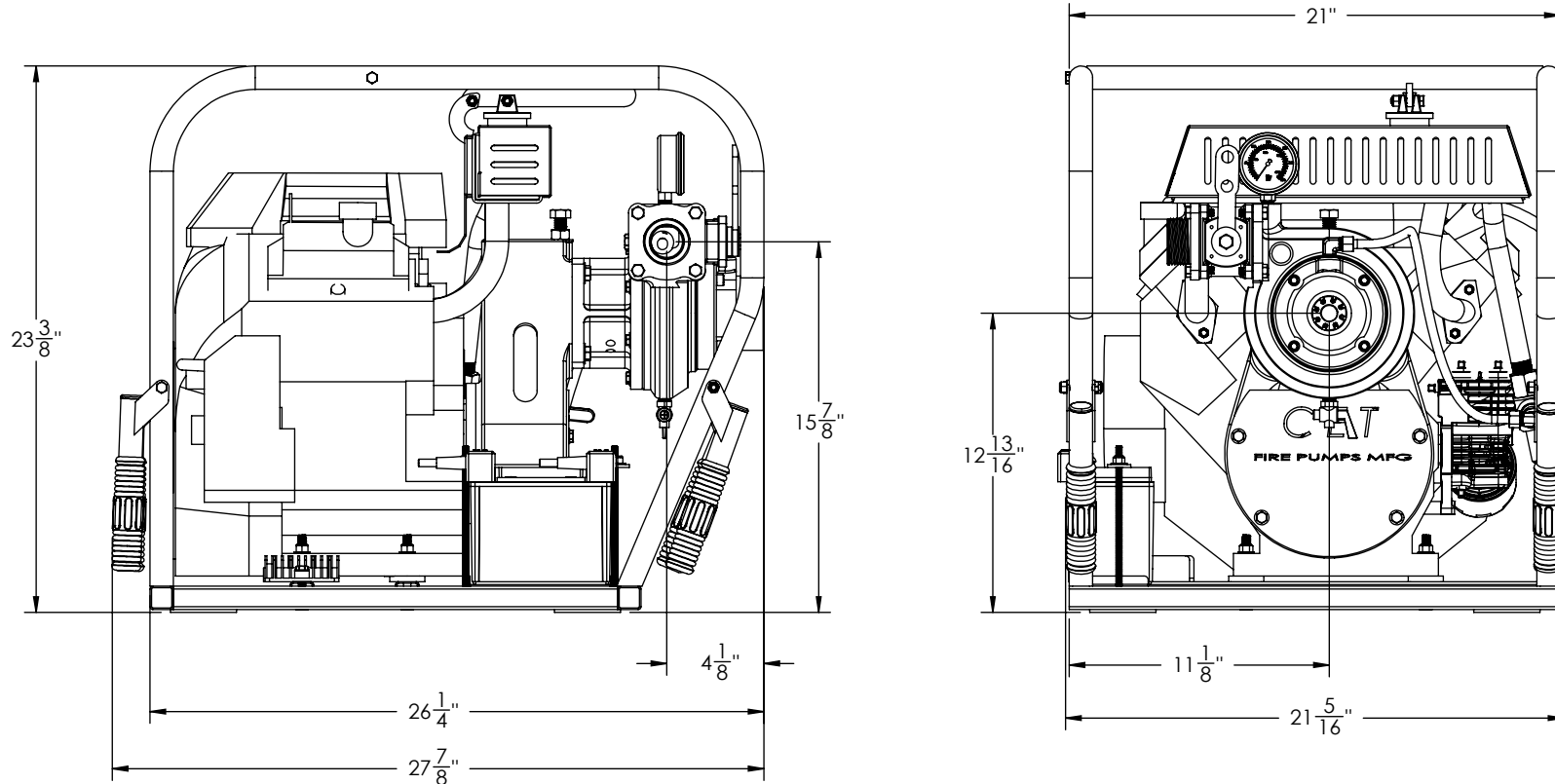


PORTABLE FIRE PUMP
PFP-20hpHND-HP
GX630 HONDA WITH HIGH-PRESSURE PUMP



WE CAN CUSTOMIZE AS YOU WANT



WET WEIGHT: 185 Lbs



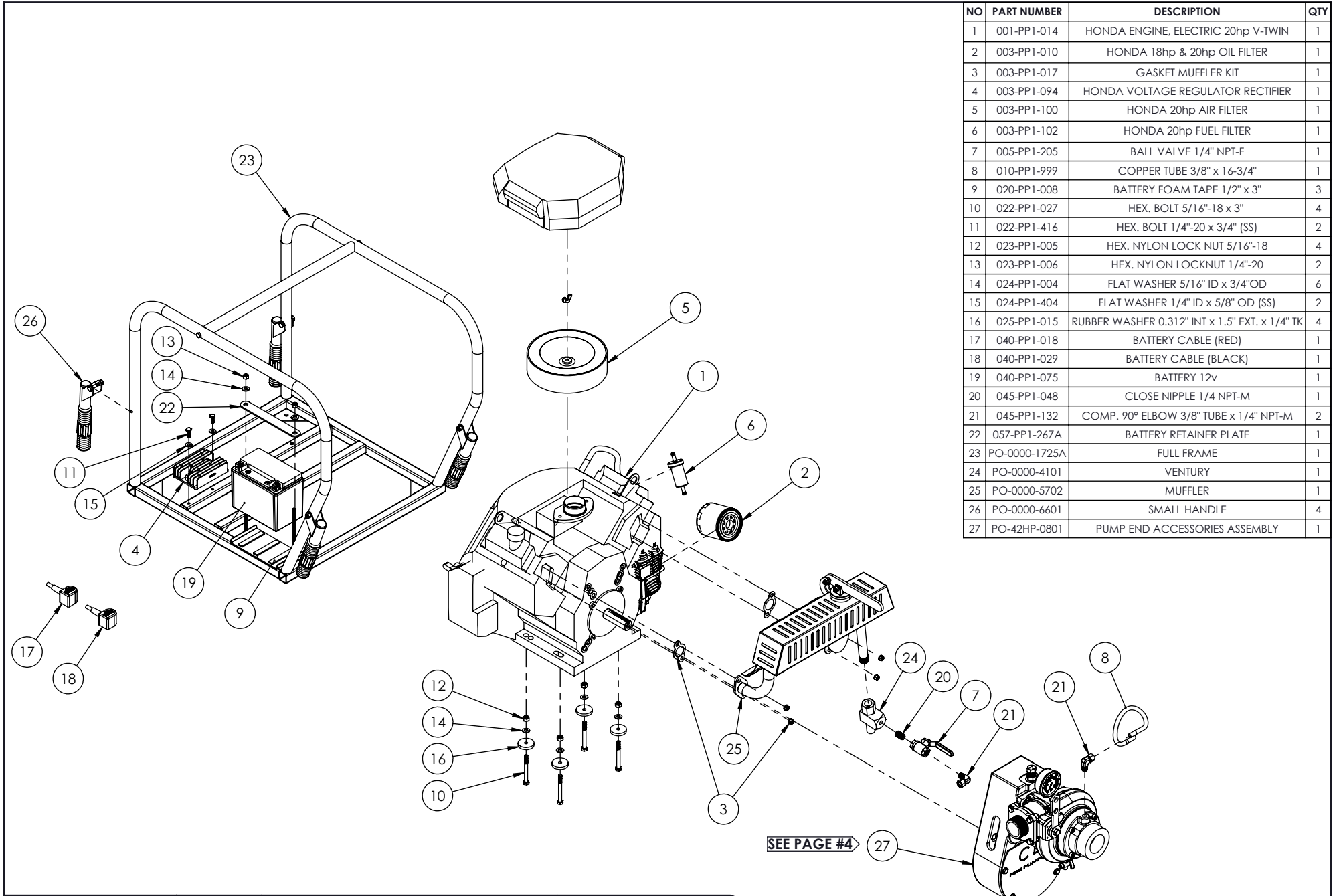
CREATED
BY: M.P.
DATE: 13-09-16
VERIFIED
BY: M.P.
DATE: 13-09-16

TITLE : *PPF-20hpHND-HP*
FULL FRAME
No: **PO-42HP-0701-A**

WARNING



THIS DOCUMENT REMAINS THE PROPERTY OF C.E.T. FIRE PUMPS MFG.
ALL REPRODUCTION WITHOUT WRITTEN AGREEMENT FROM C.E.T. FIRE PUMPS MFG IS TOTALLY PROHIBITED.

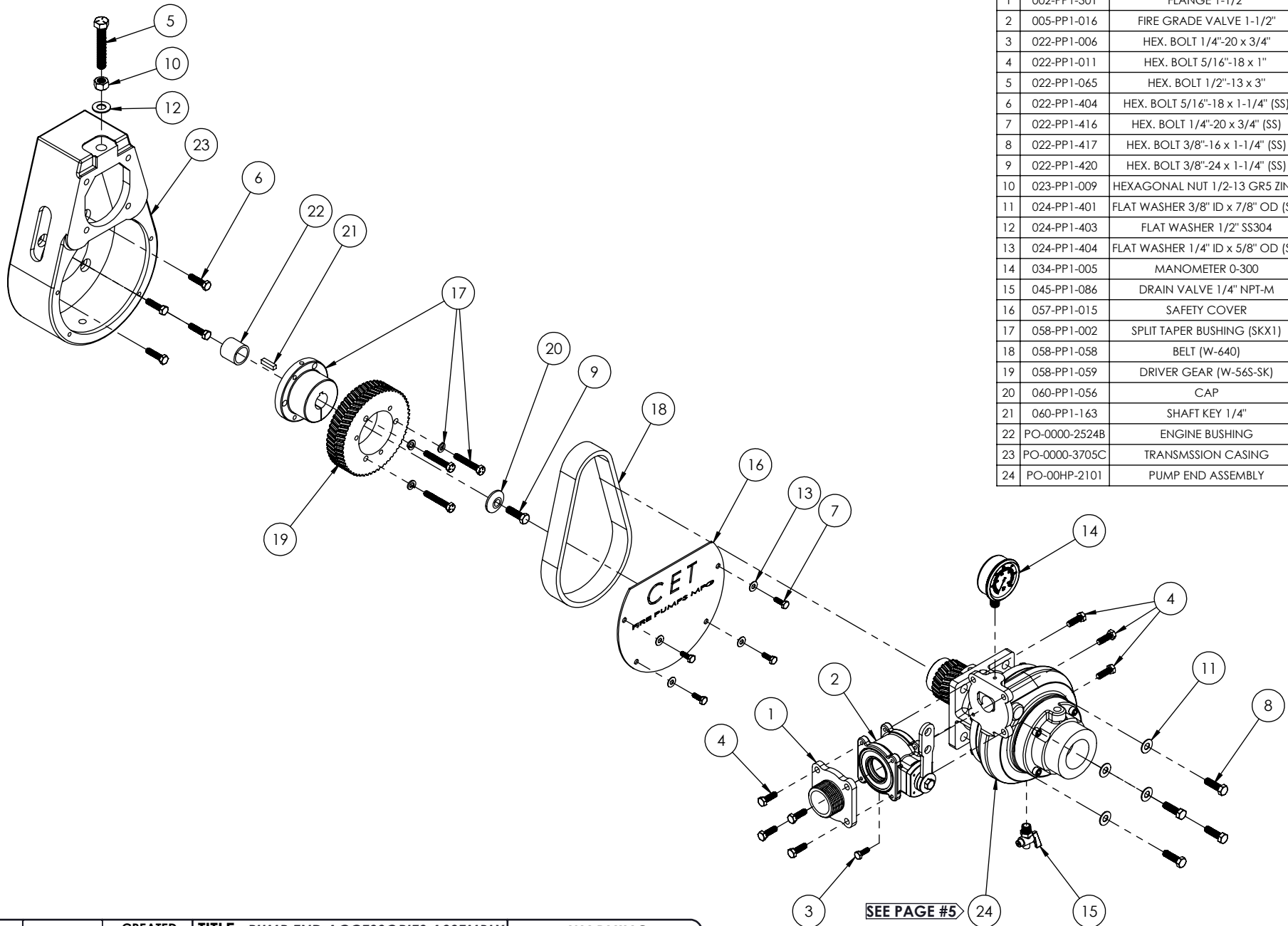
A	Version A	01-01-16	M.P.
REV.	DESCRIPTION	DATE	BY



NO	PART NUMBER	DESCRIPTION	QTY
1	001-PP1-014	HONDA ENGINE, ELECTRIC 20hp V-TWIN	1
2	003-PP1-010	HONDA 18hp & 20hp OIL FILTER	1
3	003-PP1-017	GASKET MUFFLER KIT	1
4	003-PP1-094	HONDA VOLTAGE REGULATOR RECTIFIER	1
5	003-PP1-100	HONDA 20hp AIR FILTER	1
6	003-PP1-102	HONDA 20hp FUEL FILTER	1
7	005-PP1-205	BALL VALVE 1/4" NPT-F	1
8	010-PP1-999	COPPER TUBE 3/8" x 16-3/4"	1
9	020-PP1-008	BATTERY FOAM TAPE 1/2" x 3"	3
10	022-PP1-027	HEX. BOLT 5/16"-18 x 3"	4
11	022-PP1-416	HEX. BOLT 1/4"-20 x 3/4" (SS)	2
12	023-PP1-005	HEX. NYLON LOCK NUT 1/4"-18	4
13	023-PP1-006	HEX. NYLON LOCKNUT 1/4"-20	2
14	024-PP1-004	FLAT WASHER 5/16" ID x 3/4"OD	6
15	024-PP1-404	FLAT WASHER 1/4" ID x 5/8" OD (SS)	2
16	025-PP1-015	RUBBER WASHER 0.312" INT x 1.5" EXT. x 1/4" TK	4
17	040-PP1-018	BATTERY CABLE (RED)	1
18	040-PP1-029	BATTERY CABLE (BLACK)	1
19	040-PP1-075	BATTERY 12v	1
20	045-PP1-048	CLOSE NIPPLE 1/4 NPT-M	1
21	045-PP1-132	COMP. 90° ELBOW 3/8" TUBE x 1/4" NPT-M	2
22	057-PP1-267A	BATTERY RETAINER PLATE	1
23	PO-0000-1725A	FULL FRAME	1
24	PO-0000-4101	VENTURY	1
25	PO-0000-5702	MUFFLER	1
26	PO-0000-6601	SMALL HANDLE	4
27	PO-42HP-0801	PUMP END ACCESSORIES ASSEMBLY	1

SEE PAGE #4

		CREATED BY: M.P. DATE: 13-09-16	TITLE : PFP-20hpHND-HP FULL FRAME	WARNING THIS DOCUMENT REMAINS THE PROPERTY OF C.E.T. FIRE PUMPS MFG. ALL REPRODUCTION WITHOUT WRITTEN AGREEMENT FROM C.E.T. FIRE PUMPS MFG IS TOTALLY PROHIBITED.	A REV.	Version A DESCRIPTION	01-01-16 DATE	M.P. BY
		VERIFIED BY: M.P. DATE: 13-09-16	No: PO-42HP-0701-A					



NO	PART NUMBER	DESCRIPTION	QTY
1	002-PP1-301	FLANGE 1-1/2"	1
2	005-PP1-016	FIRE GRADE VALVE 1-1/2"	1
3	022-PP1-006	HEX. BOLT 1/4"-20 x 3/4"	1
4	022-PP1-011	HEX. BOLT 5/16"-18 x 1"	7
5	022-PP1-065	HEX. BOLT 1/2"-13 x 3"	1
6	022-PP1-404	HEX. BOLT 5/16"-18 x 1-1/4" (SS)	4
7	022-PP1-416	HEX. BOLT 1/4"-20 x 3/4" (SS)	4
8	022-PP1-417	HEX. BOLT 3/8"-16 x 1-1/4" (SS)	4
9	022-PP1-420	HEX. BOLT 3/8"-24 x 1-1/4" (SS)	1
10	023-PP1-009	HEXAGONAL NUT 1/2-13 GR5 ZINC	1
11	024-PP1-401	FLAT WASHER 3/8" ID x 7/8" OD (SS)	4
12	024-PP1-403	FLAT WASHER 1/2" SS304	1
13	024-PP1-404	FLAT WASHER 1/4" ID x 5/8" OD (SS)	4
14	034-PP1-005	MANOMETER 0-300	1
15	045-PP1-086	DRAIN VALVE 1/4" NPT-M	1
16	057-PP1-015	SAFETY COVER	1
17	058-PP1-002	SPLIT TAPER BUSHING (SKX1)	1
18	058-PP1-058	BELT (W-640)	1
19	058-PP1-059	DRIVER GEAR (W-56S-SK)	1
20	060-PP1-056	CAP	1
21	060-PP1-163	SHAFT KEY 1/4"	1
22	PO-0000-2524B	ENGINE BUSHING	1
23	PO-0000-3705C	TRANSMSSION CASING	1
24	PO-00HP-2101	PUMP END ASSEMBLY	1



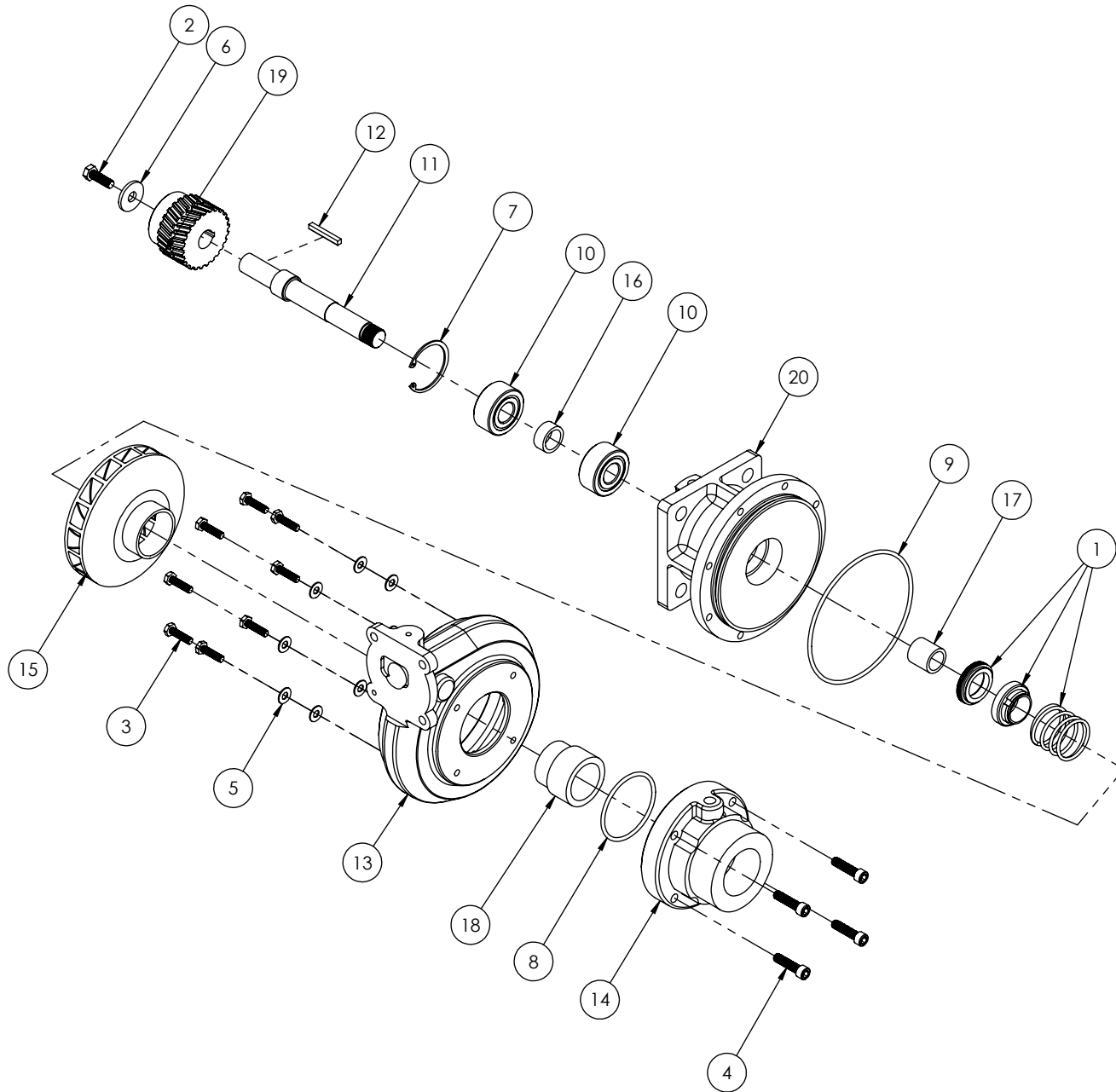
nqa.
 ISO 9001
 Registered
 Quality
 Management

CREATED
 BY: M.P.
 DATE: 12-09-16
VERIFIED
 BY: M.P.
 DATE: 12-09-16

TITLE : PUMP END ACCESSORIES ASSEMBLY
 20hpHND-HP
No: PO-42HP-0801

WARNING
 THIS DOCUMENT REMAINS THE PROPERTY
 OF C.E.T. FIRE PUMPS MFG.
 ALL REPRODUCTION WITHOUT WRITTEN
 AGREEMENT FROM C.E.T. FIRE PUMPS MFG
 IS TOTALLY PROHIBITED.

A	Version A	01-01-16	M.P.
REV.	DESCRIPTION	DATE	BY



NO	PART NUMBER	DESCRIPTION	QTY
1	020-PP1-006	1.00" T-21 BP1C1 SEALS	1
2	022-PP1-403	HEX. BOLT 5/16"-18 x 1" (SS)	1
3	022-PP1-410	HEX. BOLT 1/4"-20 x 1" (SS)	8
4	022-PP1-872	SOCKET HEAD CAP SCREW 5/16"-18 x 1-1/4"	4
5	024-PP1-404	FLAT WASHER 1/4" ID x 5/8" OD (SS)	8
6	024-PP1-420	WASHER	1
7	025-PP1-040	RETAINING RING	1
8	052-PP1-230	O-RING 2-230 AB	1
9	052-PP1-251	O-RING	1
10	058-PP1-001	BEARING	2
11	060-PP1-166A	SHAFT	1
12	060-PP1-241	KEY SHAFT 3/16" x 3/16" x 1.5"	1
13	PO-0000-2205	CASING	1
14	PO-0000-2303	COVER	1
15	PO-0000-2404	IMPELLER	1
16	PO-0000-2509	BUSHING	1
17	PO-0000-2523	BUSHING	1
18	PO-0000-2603	WATER RING	1
19	PO-0000-2701	DRIVEN GEAR (W-25S-MPB)	1
20	PO-0000-3702	BELL HOUSING	1



CREATED
 BY: M.P.
 DATE: 09-09-16
VERIFIED
 BY: M.P.
 DATE: 09-09-16

TITLE : PUMP END ASSEMBLY
 18hpVGD-20hpHND/KHL-23hpVGD
No: PO-00HP-2101

WARNING
 THIS DOCUMENT REMAINS THE PROPERTY OF C.E.T. FIRE PUMPS MFG.
 ALL REPRODUCTION WITHOUT WRITTEN AGREEMENT FROM C.E.T. FIRE PUMPS MFG IS TOTALLY PROHIBITED.

A	Version A	01-01-16	M.P.
REV.	DESCRIPTION	DATE	BY