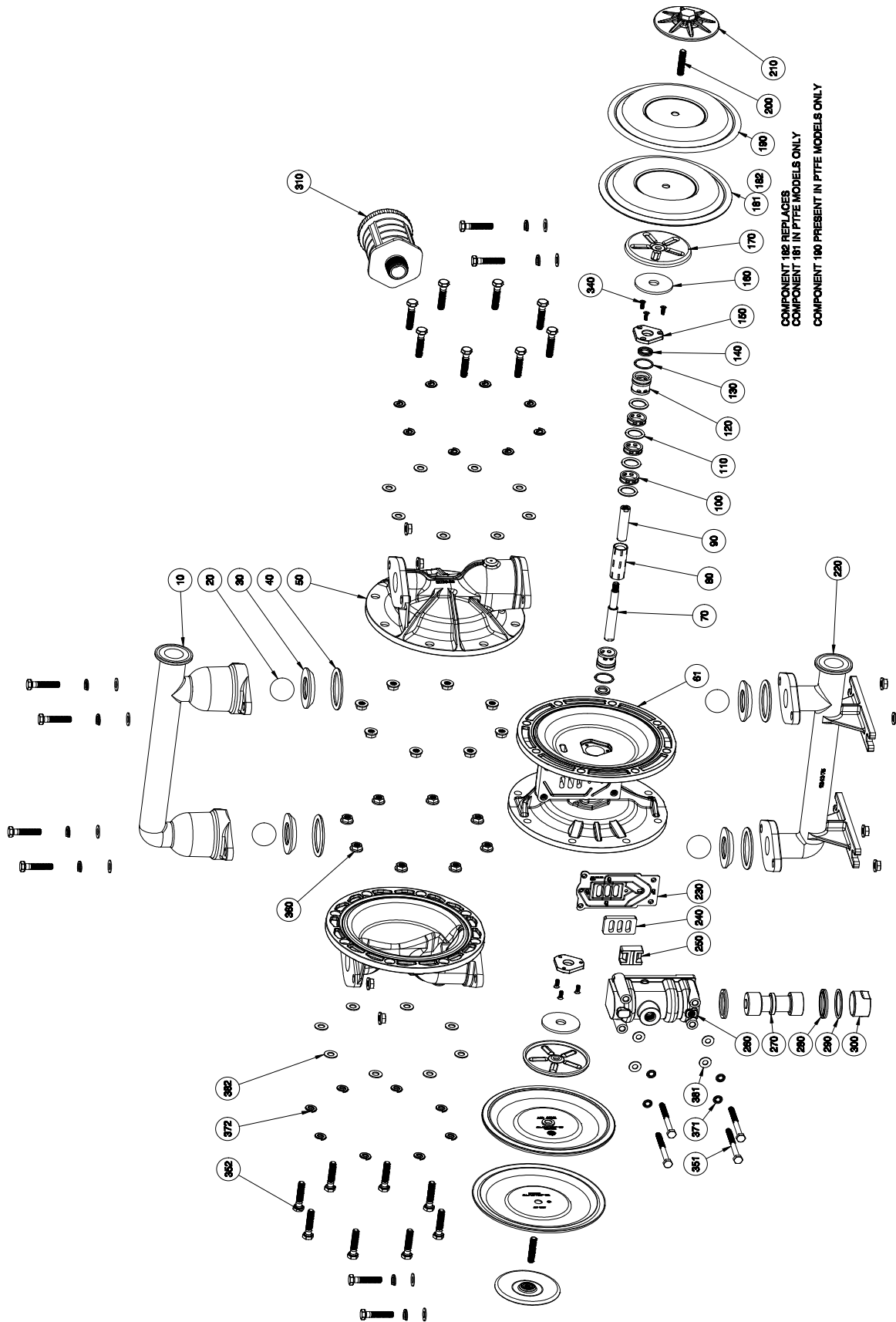


# EXPLODED VIEW & PARTS LIST

F100-TAE-\*\*\*\*-\*\*\*



COMPONENT 182 REPLACES  
COMPONENT 181 IN PTFE MODELS ONLY  
COMPONENT 190 PRESENT IN PTFE MODELS ONLY



# PARTS LIST - F100-TAE-\*\*\*\*-\*\*\*

ITEM	DESCRIPTION	QTY	PUMP MODEL	PART NO.	MATERIAL
10	DISCHARGE MANIFOLD (TRI-CLAMP)	1	ALL MODELS	11341-75	Stainless Steel
20	BALL	4	F100-TAE-*B**_*** F100-TAE-*S**_*** F100-TAE-*T**_***	11008-14 11008-23 11008-45	Buna-N (FDA) Santoprene® (FDA) PTFE
30	VALVE SEAT	4	F100-TAE-***3*_***	10927-26	Stainless Steel
40	O-RING (VALVE SEAT)	4	F100-TAE-***B_*** F100-TAE-***T_*** F100-TAE-***M_***	11947-14 11947-17 11947-81	Buna-N (FDA) PTFE EPDM (FDA)
50	OUTER CHAMBER	2	ALL MODELS	10726-75	Stainless Steel
61	INTERMEDIATE	1	ALL MODELS	11526-20	Aluminum
70 & 90	DIAPHRAGM ROD ASSEMBLY	1	ALL MODELS	35005-00	Stainless Steel
80	PILOT SLEEVE	1	ALL MODELS	10105-31 Δ	Acetel
100	INNER SPACER (PILOT SLEEVE)	3	ALL MODELS	10203-40 Δ	Polypropylene
110	O-RING (PILOT SLEEVE)	4	ALL MODELS	11920-16 Δ	Urethane
120	END SPACER (PILOT SLEEVE)	2	ALL MODELS	10209-40 Δ	Polypropylene
130	O-RING (END SPACER)	2	ALL MODELS	11923-16 Δ	Urethane
140	LIP SEAL (DIAPHRAGM ROD)	2	ALL MODELS	12000-76 Δ	Nitrile
150	RETAINING PLATE	2	ALL MODELS	12718-54	Nylon
160	BUMPER	2	ALL MODELS	12325-16	Urethane
170	INNER DIAPHRAGM PLATE	2	ALL MODELS	11104-25	Plated Steel
181	DIAPHRAGM	2	F100-TAE-H***_*** F100-TAE-4***_***	10612-18 10612-80	Hytrell® (FDA) Santoprene® (FDA)
182	DIAPHRAGM, BACKUP (PTFE ONLY)	2	F100-TA3-T***_***	10613-80	Santoprene® (FDA)
190	PTFE OVERLAY (PTFE ONLY)	2	F100-TA3-T***_***	11409-59	PTFE
200 & 210	OUTER DIAPHRAGM PLATE W/ THREADED STUD	2	F100-TAE-****_***	11220-75	Stainless Steel
220	SUCTION MANIFOLD - (TRI-CLAMP)	1	ALL MODELS	11342-75	Stainless Steel
230	AIR VALVE GASKET	1	ALL MODELS	12125-19 ‡	Nitrile
240	SHUTTLE PLATE	1	ALL MODELS	10451-77 ‡	Ceramic
250	SHUTTLE	1	ALL MODELS	10431-32 ‡	Special
260	AIR VALVE BODY	1	ALL MODELS	11619-20 ‡	Aluminum
270	AIR VALVE SPOOL	1	ALL MODELS	10482-31 ‡	Acetel
280	LIP SEAL (AIR VALVE)	2	ALL MODELS	12003-76 ‡	Nitrile
290	O-RING (AIR VALVE END PLUG)	1	ALL MODELS	11913-11 ‡	Nitrile
300	AIR VALVE END PLUG	1	ALL MODELS	11706-20 ‡	Aluminum
310	MUFFLER MUFFLER (METAL)	1	ALL MODELS OPTIONAL	13001-00 13009-00	Standard Metal
320	N/A				
330	N/A				
340	SCREW, FLAT HEAD (#6-32 X 7/16")	6	ALL MODELS	12578-26	Stainless Steel
351	SCREW, HEX HEAD CAP (1/4"-20 X 3")	4	ALL MODELS	12516-26	Stainless Steel
352	SCREW, HEX HEAD CAP (5/16"-18 X 1-1/2")	24	ALL MODELS	12584-26	Stainless Steel

# PARTS LIST - F100-TAE-\*\*\*\*-\*\*\*

ITEM	DESCRIPTION	QTY	PUMP MODEL	PART NO.	MATERIAL
360	NUT, FLANGE (5/16"-18)	24	ALL MODELS	12608-26	Stainless Steel
371	WASHER, LOCKTOOTH (1/4")	4	ALL MODELS	12350-26	Stainless Steel
372	WASHER, SPLIT LOCK (5/16")	24	ALL MODELS	12313-26	Stainless Steel
381	WASHER (1/4")	4	ALL MODELS	12300-26	Stainless Steel
382	WASHER (5/16")	24	ALL MODELS	12310-26	Stainless Steel
400	GROUNDING LUG (NOT SHOWN)	1	OPTIONAL	13481-20	Aluminum
	Magnalube® .75 oz. (As Required)		ALL MODELS	13404-00	Grease

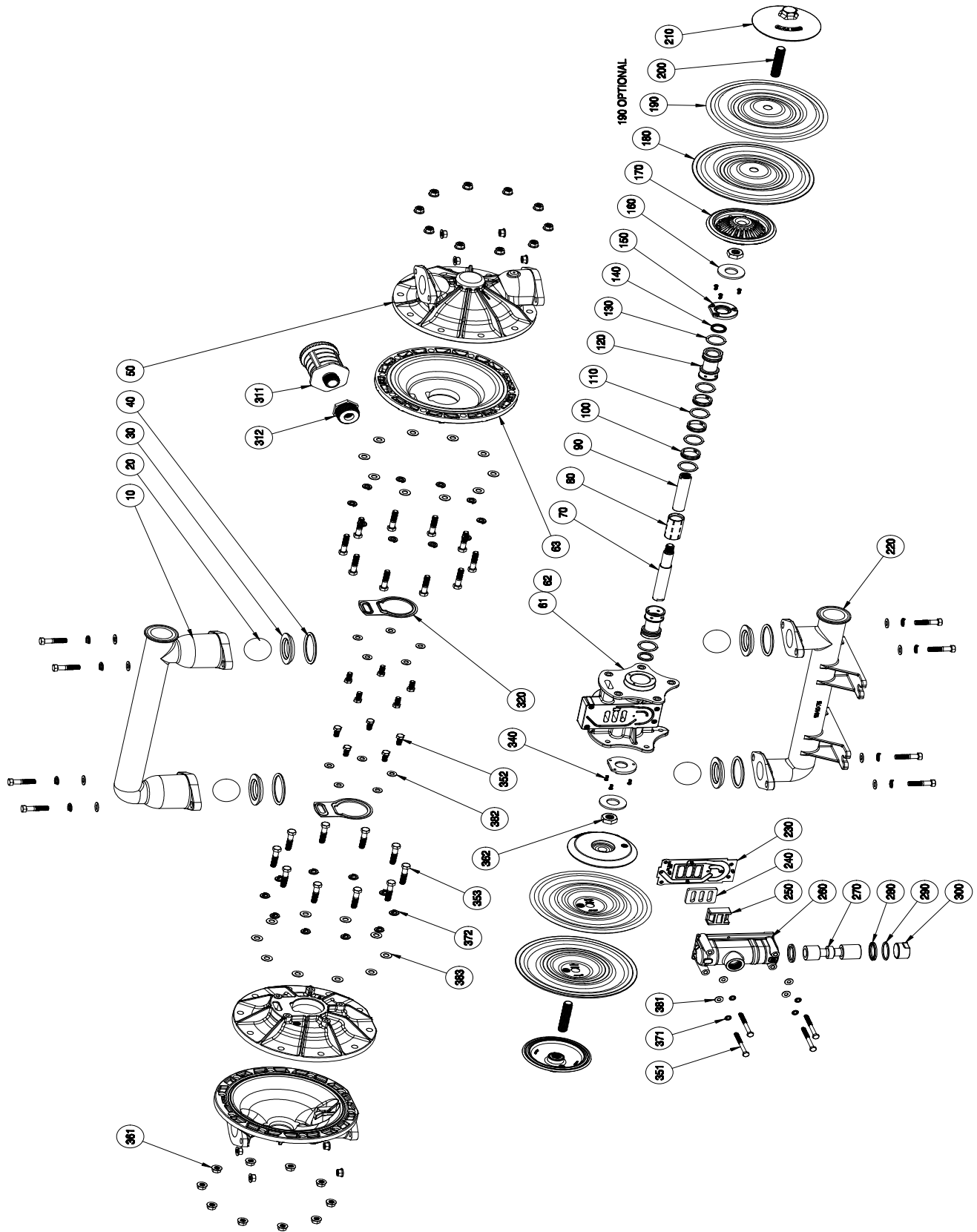
\* Any Character

‡ , Δ Only sold as part of assembly

ASSEMBLY PART NUMBERS	PUMP MODEL	PART NO.	MATERIAL
‡ AIR VALVE ASSEMBLY 230, 240, 250, 260, 270, 280, 290, 300	ALL MODELS	FMK-100-A	Various
Δ PILOT SEEVE ASSEMBLY 80, 100, 110, 120, 130, 140	ALL MODELS	FPK-100-A	Various

# EXPLODED VIEW & PARTS LIST

F150-T\*E-\*\*\*\*\_\*\*\*



# PARTS LIST - F150-T\*E-\*\*\*\*-\*\*\*

ITEM	DESCRIPTION	QTY	PUMP MODEL	PART NO.	MATERIAL
10	DISCHARGE MANIFOLD - (TRI-CLAMP)	1	All Models	11339-75	Stainless Steel
20	BALL	4	F150-T*E-*B**-*** F150-T*E-*S**-*** F150-T*E-*T**-***	11010-14-4PK 11010-23-4PK 11010-59-4PK	Buna-N (FDA) Santoprene® (FDA) PTFE
30	VALVE SEAT	4	F150-T*E-**3*-***	10930-26-4PK	Stainless Steel
40	O-RING (VALVE SEAT)	4	F150-T*E-***B-*** F150-T*E-***T-*** F150-T*E-***M-***	11952-14-4PK 11952-17-4PK 11952-81-4PK	Buna-N (FDA) PTFE EPDM (FDA)
50	OUTER CHAMBER	2	All Models	10727-75	Stainless Steel
61 & 62	INTERMEDIATE	1	F150-TAE-****-*** F150-T3E-****-***	11525-20 11525-26	Aluminum Stainless Steel
63	INNER CHAMBER	2	F150-TAE-****-*** F150-T3E-****-***	11806-20 11806-26	Aluminum Stainless Steel
70 & 90	DIAPHRAGM ROD ASSEMBLY	1	All Models	35004-00	Stainless Steel
80	VALVE SLEEVE	1	All Models	10107-31 Δ	Acetal
100	INNER SPACER (PILOT SLEEVE)	3	All Models	10205-40 Δ	Polypropylene
110	O-RING (PILOT SLEEVE SPACER)	4	All Models	11919-16 Δ	Urethane
120	END SPACER (PILOT SLEEVE)	2	All Models	10208-40 Δ	Polypropylene
130	O-RING (END SPACER)	2	All Models	11919-11 Δ	Nitrile
140	LIP SEAL (DIAPHRAGM ROD)	2	All Models	12002-76 Δ	Nitrile
150	RETAINING PLATE	2	All Models	12717-54	Nylon
160	BUMPER	2	All Models	12317-16	Urethane
170	INNER DIAPHRAGM PLATE	2	F150-TAE-****-*** F150-T3E-****-***	11114-20 11114-26	Aluminum Stainless Steel
180	DIAPHRAGM (BACKUP)	2	F150-T*E-H***-*** F150-T*E-4***-*** F150-T*E-T***-***(B-UP)	10615-18-2PK 10615-80-2PK 10615-80-2PK	Hytrel® (FDA) Santoprene® (FDA) Santoprene® (FDA)
190	OVERLAY (PTFE ONLY)	1	F150-T*E-T***-***	11410-59-2PK	PTFE
200&210	OUTER DIAPHRAGM PLATE W/ THREADED STUD	2	All Models	11221-75	Stainless Steel
220	SUCTION MANIFOLD - (TRI-CLAMP)	1	All Models	11340-75	Stainless Steel
230	AIR VALVE GASKET	1	All Models	12124-19 ‡	Nitrile
240	SHUTTLE PLATE	1	All Models	10450-77 ‡	Ceramic
250	SHUTTLE	1	All Models	10430-00 ‡	Special
260	AIR VALVE BODY	1	F150-TAE-****-*** F150-T3E-****-***	11618-20 ‡ 11618-26 ‡	Aluminum Stainless Steel
270	AIR VALVE SPOOL	1	All Models	10483-31 ‡	Acetal
280	LIP SEAL (AIR VALVE)	2	All Models	12003-76 ‡	Nitrile
290	O-RING (AIR VALVE END PLUG)	1	All Models	11913-11 ‡	Nitrile
300	AIR VALVE END PLUG	1	F150-TAE-****-*** F150-T3E-****-***	11706-20 ‡ 11706-26 ‡	Aluminum Stainless Steel
311&312	MUFFLER w/ BUSHING	1	All Models Optional	13013-00 13010-00	Polypropylene Metal
320	INNER CHAMBER GASKET	2	All Models	12123-19	Nitrile
330	N/A				
340	SCREW, SELF-LOCKING (#6-32 X 3/8")	6	All Models	12571-26	Stainless Steel

# PARTS LIST - F150-T\*E-\*\*\*\*-\*\*\*

ITEM	DESCRIPTION	QTY	PUMP MODEL	PART NO.	MATERIAL
351	SCREW, HEX HEAD CAP (1/4"-20 X 3")	4	All Models	12516-26	Stainless Steel
352	SCREW, HEX HEAD CAP (5/16"-18 X 3/4")	10	All Models	12536-26	Stainless Steel
353	SCREW, HEX HEAD CAP (3/8"-16 X 1-3/4")	28	All Models	12581-26	Stainless Steel
361	NUT, FLANGE (3/8"-16)	28	All Models	12612-26	Stainless Steel
362	NUT (5/8"-11)	2	All Models	12579-25	Plated Steel
371	WASHER, LOCK (1/4")	4	All Models	12350-26	Stainless Steel
372	WASHER, SPLIT LOCK (3/8")	28	All Models	12316-26	Stainless Steel
381	WASHER, FLAT (1/4")	4	All Models	12300-26	Stainless Steel
382	WASHER, FLAT (5/16")	10	All Models	12310-26	Stainless Steel
383	WASHER, FLAT (3/8")	28	All Models	12303-26	Stainless Steel
390	N/A				
400	GROUND LUG (NOT SHOWN)	1	Optional	13481-20	Aluminum
	Magnalube® .75 oz. (As Required)		ALL MODELS	13404-00	Grease

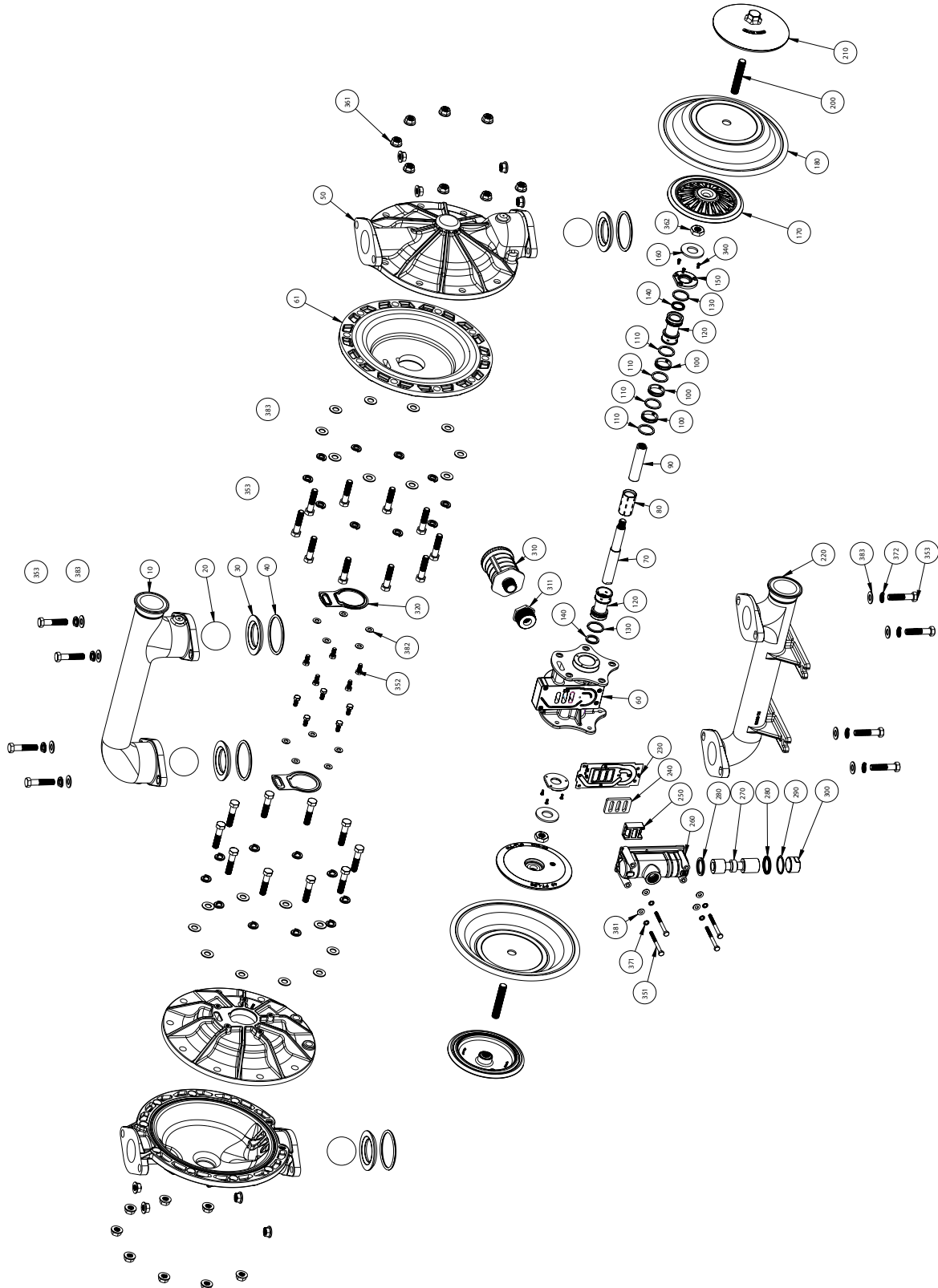
\* Any Character

‡, Δ Only sold as part of assembly

ASSEMBLY PART NUMBERS	PUMP MODEL	PART NO.	MATERIAL
‡ AIR VALVE ASSEMBLY	F150-TAE-****-***	FMK-150-A	Various
230, 240, 250, 260, 270, 280, 290, 300	F150-T3E-****-***	FMK-150-3	Various
Δ PILOT VALVE ASSEMBLY	F150-TAE-****-***	FPK-150-A	Various
80, 100, 110, 120, 130, 140	F150-T3E-****-***	FPK-150-3	Various

# EXPLODED VIEW & PARTS LIST

F200-TAE-\*\*\*\*-\*\*\*



# PARTS LIST - F200-T\*E-\*\*\*\*-\*\*\*

ITEM	DESCRIPTION	QTY	PUMP MODEL	PART NO.	MATERIAL
10	DISCHARGE MANIFOLD - (TRI-CLAMP)	1	All Models	10560-75	Stainless Steel
20	BALL	4	F200-T*E-*B**_*** F200-T*E-*S**_*** F200-T*E-*T**_***	11009-14 11009-23 11009-45	Buna-N (FDA) Santoprene® (FDA) PTFE
30	VALVE SEAT	4	F200-T*E-***3*_***	10925-26	Stainless Steel
40	O-RING, VALVE SEAT	4	F200-T*E-***B-*** F200-T*E-***T-*** F200-T*E-***M-***	11917-14 11917-17 11917-81	Buna-N (FDA) PTFE EPDM (FDA)
50	OUTER CHAMBER	2	All Models	10725-75	Stainless Steel
60	INTERMEDIATE	1	F200-TAE-****_*** F200-T3E-****_***	11525-20 11525-26	Aluminum Stainless Steel
61	INNER CHAMBER	2	F200-TAE-****_*** F200-T3E-****_***	11805-20 11805-26	Aluminum Stainless Steel
70 & 90	DIAPHRAGM ROD ASSEMBLY	1	All Models	35002-00	Stainless Steel
80	PILOT VALVE	1	All Models	10107-31 Δ	Acetal
100	INNER SPACER, PILOT SLEEVE	3	All Models	10205-40 Δ	Polypropylene
110	O-RING (PILOT SLEEVE SPACER)	4	All Models	11919-16 Δ	Urethane
120	END SPACER, PILOT SLEEVE	2	All Models	10208-40 Δ	Polypropylene
130	O-RING (END SPACER)	2	All Models	11919-11 Δ	Nitrile
140	LIP SEAL (DIAPHRAGM ROD)	2	All Models	12002-76 Δ	Nitrile
150	RETAINING PLATE	2	All Models	12717-54	Nylon
160	BUMPER	2	All Models	12317-16	Urethane
170	INNER DIAPHRAGM PLATE	2	F200-TAE-****_*** F200-T3E-****_***	11113-20 11113-26	Aluminum Stainless Steel
180	DIAPHRAGM (BACKUP)	2	F200-T*E-H***_*** F200-T*E-4***_*** F200-T*3-T***_*** (B-UP)	10611-18 10611-80 10611-80	Hytrell Santoprene® (FDA) Santoprene® (FDA)
190	OVERLAY (DIAPHRAGM)	2	F200-T*3-T***_*** ONLY	11408-59	PTFE
200&210	OUTER DIAPHRAGM PLATE W/THREADED STUD	2	F200-T*E-****_***	11218-75	Stainless Steel
220	SUCTION MANIFOLD - (TRI-CLAMP)	1	All Models	11338-75	Stainless Steel
230	GASKET, AIR VALVE	1	All Models	12124-19 ‡	Nitrile
240	SHUTTLE PLATE	1	All Models	10450-77 ‡	Ceramic
250	SHUTTLE	1	All Models	10430-00 ‡	Special
260	AIR VALVE BODY	1	F200-TAE-****_*** F200-T3E-****_***	11618-20 ‡ 11618-26 ‡	Aluminum Stainless Steel
270	AIR VALVE SPOOL	1	All Models	10483-31 ‡	Acetal
280	LIP SEAL (AIR VALVE)	2	All Models	12003-76 ‡	Nitrile
290	O-RING (AIR VALVE END PLUG)	1	All Models	11913-11 ‡	Nitrile
300	AIR VALVE END PLUG	1	F200-TAE-****_*** F200-T3E-****_***	11706-20 ‡ 11706-26 ‡	Aluminum Stainless Steel
310&311	MUFFLER w/ BUSHING	1	Standard Optional	13013-00 13010-00	Polypropylene Metal
320	INNER CHAMBER GASKET	2	All Models	12123-19	Nitrile
330	N/A				
340	SELF-LOCKING PHILLIPS SCREW, (#6-32 X 3/8")	6	All Models	12571-26	Stainless Steel



# PARTS LIST - F200-T\*E-\*\*\*\*-\*\*\*

ITEM	DESCRIPTION	QTY	PUMP MODEL	PART NO.	MATERIAL
351	CAP SCREW, (1/4"-20 X 3")	4	All Models	12516-26	Stainless Steel
352	CAP SCREW, (5/16"-18 X 3/4")	10	All Models	12536-26	Stainless Steel
353	CAP SCREW, FLANGED, (1/2"-13 x 2-1/4")	28	All Models	12572-225-26	Stainless Steel
361	NUT, FLANGE (1/2"-13)	24	All Models	12582-26	Stainless Steel
362	NUT, (5/8"-11)	2	All Models	12579-25	Plated Steel
370	N/A				
381	WASHER, LOCK STAR (1/4")	4	All Models	12350-26	Stainless Steel
382	WASHER, FLAT (1/4")	4	All Models	12300-26	Stainless Steel
383	WASHER, FLAT (5/16")	10	All Models	12310-26	Stainless Steel
384	WASHER, LOCK SPLIT (1/2")	28	All Models	12323-26	Stainless Steel
385	WASHER, FLAT (1/2")	28	All Models	12306-26	Stainless Steel
390	N/A				
400	N/A				
	Magnalube® .75 oz. (As Required)		ALL MODELS	13404-00	Grease

\* Any Character

‡, Δ Only sold as part of assembly

ASSEMBLY PART NUMBERS	PUMP MODEL	PART NO.	MATERIAL
‡ PILOT VALVE ASSEMBLY 230, 240, 250, 260, 270, 280, 290, 300	All Models	FPK-200-A	Various
Δ MAIN AIR VALVE ASSEMBLY 80, 100, 110, 120, 130, 140	All Models	FMK-200-A	Various